



eSchoolData Bridge  
Installation and User Guide  
Revised: November 18, 2014

<http://apps.discoverysoftware.com/support/bridges/esd.html>

Copyright © 2008-2014 Discovery Software Ltd.

---

---

Table of Contents

**Chapter 1 – Initial Setup..... 3**  
    **Data Extraction..... 3**

**Chapter 2 – Configuring SIS Liberty..... 5**  
    **SIS Liberty..... 5**  
    **Configuring the Source connection..... 6**  
    **Setting up a School..... 7**  
    **Removing Schools..... 8**

**Chapter 2 – Advanced Setup..... 9**  
    **Using Windows Scheduled Tasks..... 9**  
        Command argument..... 10  
        Command optional Parameters..... 10

**Chapter 3 – Customizing eSchool Data Export..... 12**  
    **What Can I Customize?..... 12**

# Chapter 1 – Initial Setup

The eSchoolData bridge has been created by Contemporary Computer Services Inc. Please contact vendor for more information regarding customizing data extracts. No installation is required, the data extracts can be generated from the Microsoft® Access® database which is already available from the eSchool Data interface.

Information in eSchool Data will be exported into PDE file format which is the format used by Discovery Software Ltd. applications from the Microsoft® Access® database. The Access® database, which is available for download directly from the eSD interface (with the proper permissions), is refreshed nightly to ensure users have access to the most up to date student information.

## Data Extraction

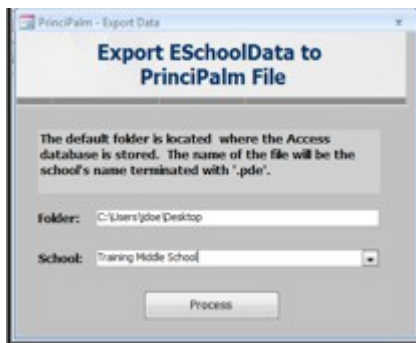
1. Create a folder on your computer that the extracted data will be saved in. (ie: \eSchoolData)
2. Navigate to **Reports** main tab
3. Choose the **Custom Reports** sub tab
4. From the Custom Reports menu, select the **Access Downloads** menu item



5. Select the current year Access file from the list to begin downloading the database in a zipped file.
6. When the download is complete, extract the database from the zipped file. Select the Access.mdb file to open the Access® database.
7. From the Reporting Dashboard, navigate to the Palm Exports tab. Select the **Principalm – Export Data** option to begin the export process



8. The Export eSchoolData to Principalm File prompt will appear. Select the folder location created in Step 1. to save the PDE file and school data extracts
9. When finished, click Process.



10. A file with the selected school's name will be generated in the specified location. The file will contain; *student demographic, student contact, student schedule, student bus, student locker, staff demographic, staff contact, course, class, marking period grade summary, marking period attendance, and calendar event* information for the selected school.

In addition, the file generation process can be automated using eSD's extensive integration and auto downloader services. For more information on automating this process, please contact the Integration Team at [eschooldatahelp@eschooldata.com](mailto:eschooldatahelp@eschooldata.com).

## Chapter 2 – Configuring SIS Liberty

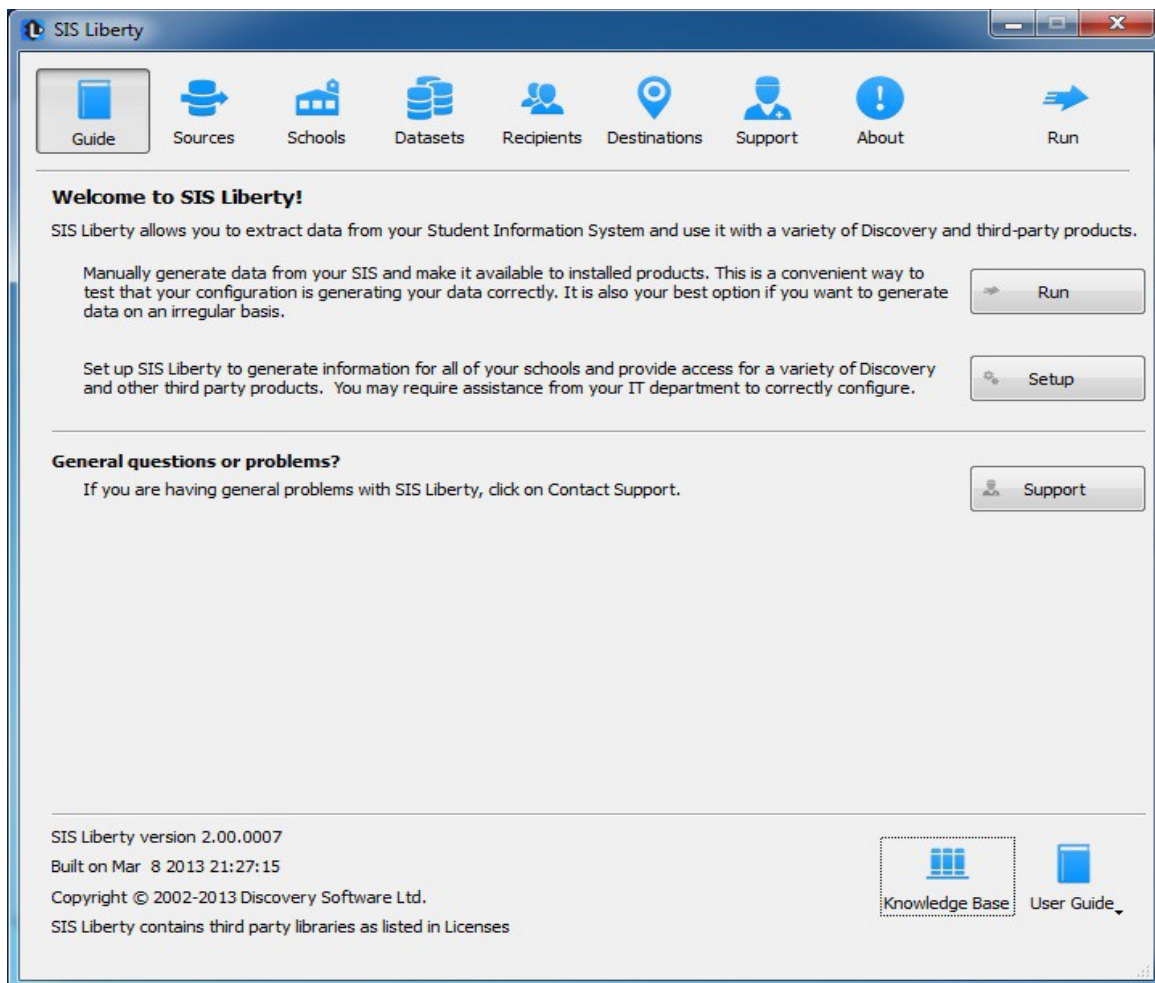
In order to use the eSchool Data data extracts with Discovery Software Ltd. applications, **Discovery's SIS Liberty** will need to be installed. Once the installation has been completed follow the instructions below to run SIS Liberty and configure your school information:

### **SIS Liberty**

SIS Liberty is the graphical user interface that allows you to configure your SIS data source, schools, datasets and recipients.

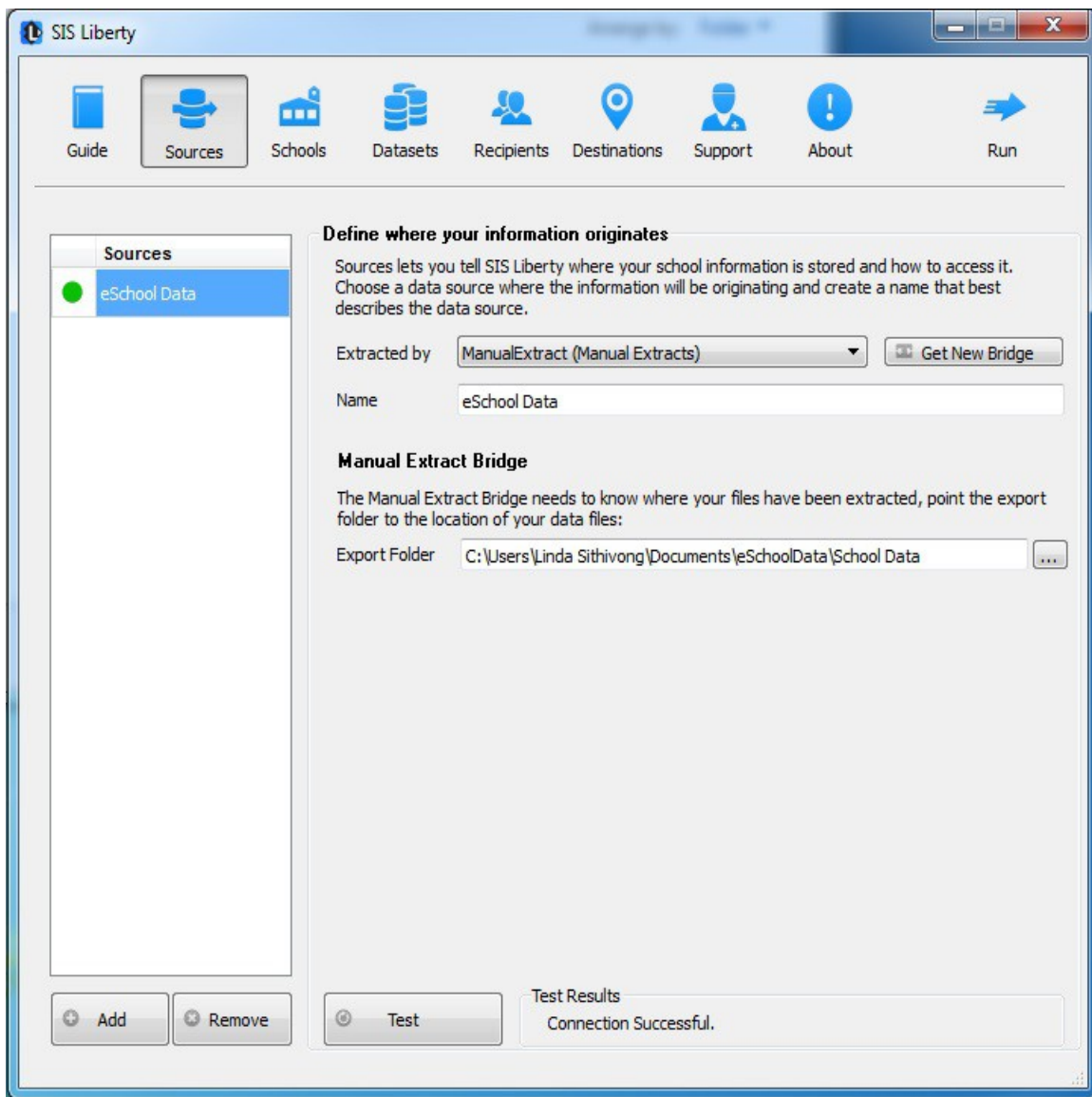
To Run SIS Liberty, choose **Start->Programs->SIS Liberty->SIS Liberty**.

SIS Liberty will show you a Guide page:



## Configuring the Source connection

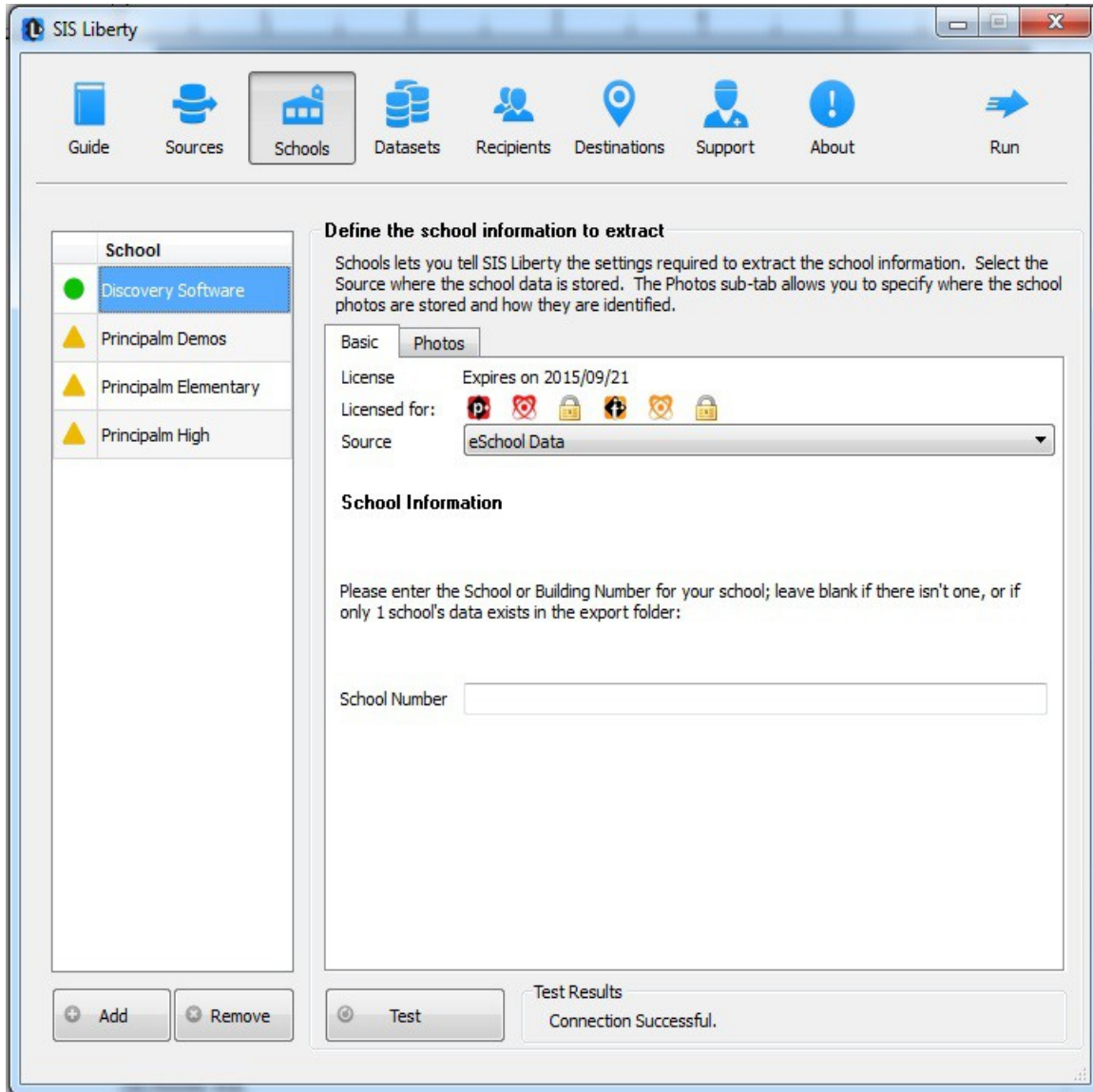
Clicking on the Sources tab will display the following:



1. Click the **Add** button to create a new connection
2. Select **Manual Extract (Manual Extract)** from the Bridge drop down. The Manual Extract bridge is used by *all* SIS datasets if data is generated manually (*in other words; not directly from a Discovery Software Ltd. SIS data extractor*). The Manual Extract bridge can be downloaded from: <http://apps.discoverysoftware.com/support/bridges/manualextract.html>
3. Enter a **Name** that you want to use to identify the connection. Eg. eSchool Data
4. **Export Folder:** enter the data source directory from where the eSchool Data datasets are stored as explained in *Chapter 1: Step 1*.

## Setting up a School

After the eSchool Data Source connection has been successfully completed, click on the **Schools** tab to configure School information.



Any Discovery Licenses that exist in the License folder at:  
**\\Documents\DiscoverySoftware\Licenses** will automatically be added into the Schools list.

To Add a school:

1. Click the **Add** button and browse for one or more Discovery License files (.paf) (If licenses were not loaded automatically)
2. Select the *Source* you want to associate with the selected school.

3. Enter a **School Number** only if school number is used in your PDE (contact [Discovery Support](#) if unsure)
4. Click the **Test** button to test your settings. Test results should appear in the “Test Results” section

## ***Removing Schools***

To remove a school:

1. Select the school you wish to remove from the Schools list.
2. Click on the Remove button
3. Confirm you want to remove the School by clicking on the “Yes” button.

For more information on importing photos, setting up datasets and recipients to be delivered to your Provider/Product, as well as troubleshooting/support, please refer to [DSL's SIS Liberty User Guide](#) packaged with your provider installation.

---



## Chapter 2 – Advanced Setup

### *Using Windows Scheduled Tasks*

You can turn on automatic updates so that the data extractor is run on a periodic basis. By selecting the check box **Update destination data automatically** in SIS Liberty/Destinations, this will create a scheduled task that runs in the middle of the night. If you select the check box **This computer is turned off at night** then the scheduled task will run at log on. This feature enables your users to have the latest data without having to manually run the extractor to keep data synchronized.

If you make changes/updates in SIS Liberty, the batch file will automatically be updated to reflect the new settings

To modify the Schedule task that is created by SIS Liberty:

1. Select **Programs/Accessories/System Tools/Task Scheduler**. The **Scheduled Task** control panel appears.
2. Select Scheduled Task Library to view all tasks
3. Double-click your task to modify it

SIS Liberty creates and saves all batch files to:

**\Documents\Discovery Software\Configuration**. The task created will run SIS Liberty via command line.

---

The eSchool Data Data Extractor uses command line parameters to tell the extractor to perform certain actions and pass the necessary configuration information.

### ***Command argument***

The first parameter tells the extractor what task you would like it to complete.

Command	Description	Requirements
help	Displays usage for all arguments	
params	Lists the parameters that are required by the extractor.	Must include: -group or -paramkey (see below)
test	Test the extractor for the specified group.	Must include: -group
run	Extract data	Must include: Extract type: -all, -demo or -att -license -path Specific params dependant for groups
version	Get the version of the extractor	

### ***Command optional Parameters***

The command parameter is followed by a number of required parameters for that option.

Parameter	Description	Example
--group=value	This indicates which group you would like information for. Currently, the extractor supports the connection group and the school group	--group=connection or --group=school
--paramkey=key	This indicates which param to return or list values for. This can be any valid paramkey used by the extractor. See below.	--paramkey=dsn
Extract type --all, --demo, --att	This parameter tells the extractor if you want a full or partial extraction: -all : extracts all data supported -demo : extract just demographic information	--all

	-att : extract just attendance information	
--license=path	The full path to the license file to use for this extraction	--license=C:\mylicense.paf
--path=path	The full path to where the extracted data should be placed.	--path=C:\myschool\
--logpath=path	The full path to where logs should be placed.	--path=C:\myschool\logs\
--log=option	Where "option" can be any of these values: --log=off : no logging at all --log=consoleoff : no logging to the console --log=fileoff : no logging to file --log=sqloff : no logging to sqlite --log=extract : no logging to console while logging extract	--log=off --log=consoleoff --log=fileoff --log=sqloff --log=extract

The extractor supports the following *Connection* parameters:

Parameter	Description	Example
--dsn	The dsn name you created if you use MS SQL Server or Oracle	--dsn=eSchool Data
--user	The username for the odbc dsn.	--user=PSNavigator
--pwd	The password for the odbc dsn	--pwd=mypassword
--pwdencode	The encoded password for the odbc dsn, using the automatic scheduler will create an encoded password.	--pwdencode=!H&f3\$%&

The extractor supports the following *School* parameters:

Parameter	Description	Example
--district	The district number to extract	--district=12
--school	The school number to extract	--school=999
--activecodes	The student status codes that are considered active	--activecodes=J,V

**NOTE:** Remember to place quotes around parameters that might contain spaces.

All parameters must be set each time the extractor is run. No parameters are remembered between runs.

## Chapter 3 – Customizing eSchool Data Export

### *What Can I Customize?*

If you have suggestions on fields that exist in eSchool Data that you would like to see added, please do not hesitate to contact us at [support@discoverysoftware.com](mailto:support@discoverysoftware.com).

---