



DSL's PowerSchool Data Extractor

Installation and User Guide

Revised: August 22, 2014

<http://apps.discoverysoftware.com/support/bridges/powers-de.html>

Copyright © 2008-2014 Discovery Software Ltd.

Table of Contents

<i>Chapter 1 – Initial Setup</i>	3
SIS Liberty	3
Configuring the Source connection	4
Setting up a School	5
Removing Schools	6
<i>Chapter 2 – Advanced Setup</i>	7
Using Windows Scheduled Tasks	7
Command argument.....	8
Command optional Parameters.....	8
<i>Chapter 3 – Customizing PowerSchool Export</i>	10
What Can I Customize?	10
<i>Chapter 4 – Uninstall</i>	10
<i>Appendix A – MS SQL Server ODBC Setup</i>	11
<i>Appendix A – Oracle ODBC Setup</i>	14
Setting up a PowerSchool Oracle ODBC DSN	14
Oracle Driver Installation	17

Chapter 1 – Initial Setup

By this point you should have already installed the Discovery Data Extractor for PowerSchool program using the installer that contained these instructions.

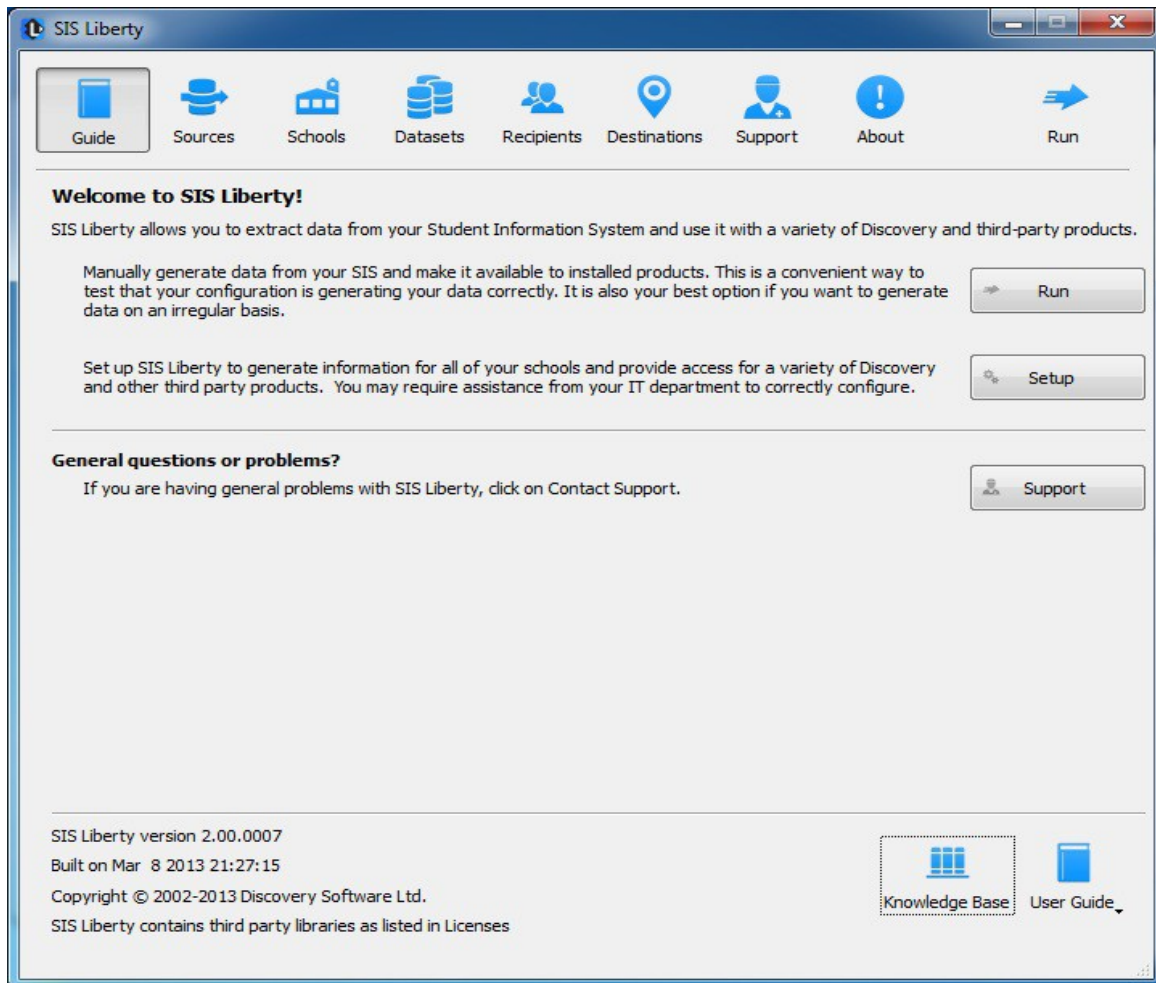
In order to use the bridge for PowerSchool, Discovery's SIS Liberty will need to be installed. Once the installation has been completed follow the instructions below to run SIS Liberty and configure your school information:

SIS Liberty

SIS Liberty is the graphical user interface that allows you to configure and manually extract data from the PowerSchool (along with any other SIS Liberty compatible bridge).

To Run SIS Liberty, choose **Start->Programs->SIS Liberty->SIS Liberty**.

SIS Liberty will show you a Guide page:



Configuring the Source connection

Clicking on the Sources tab will display the following:

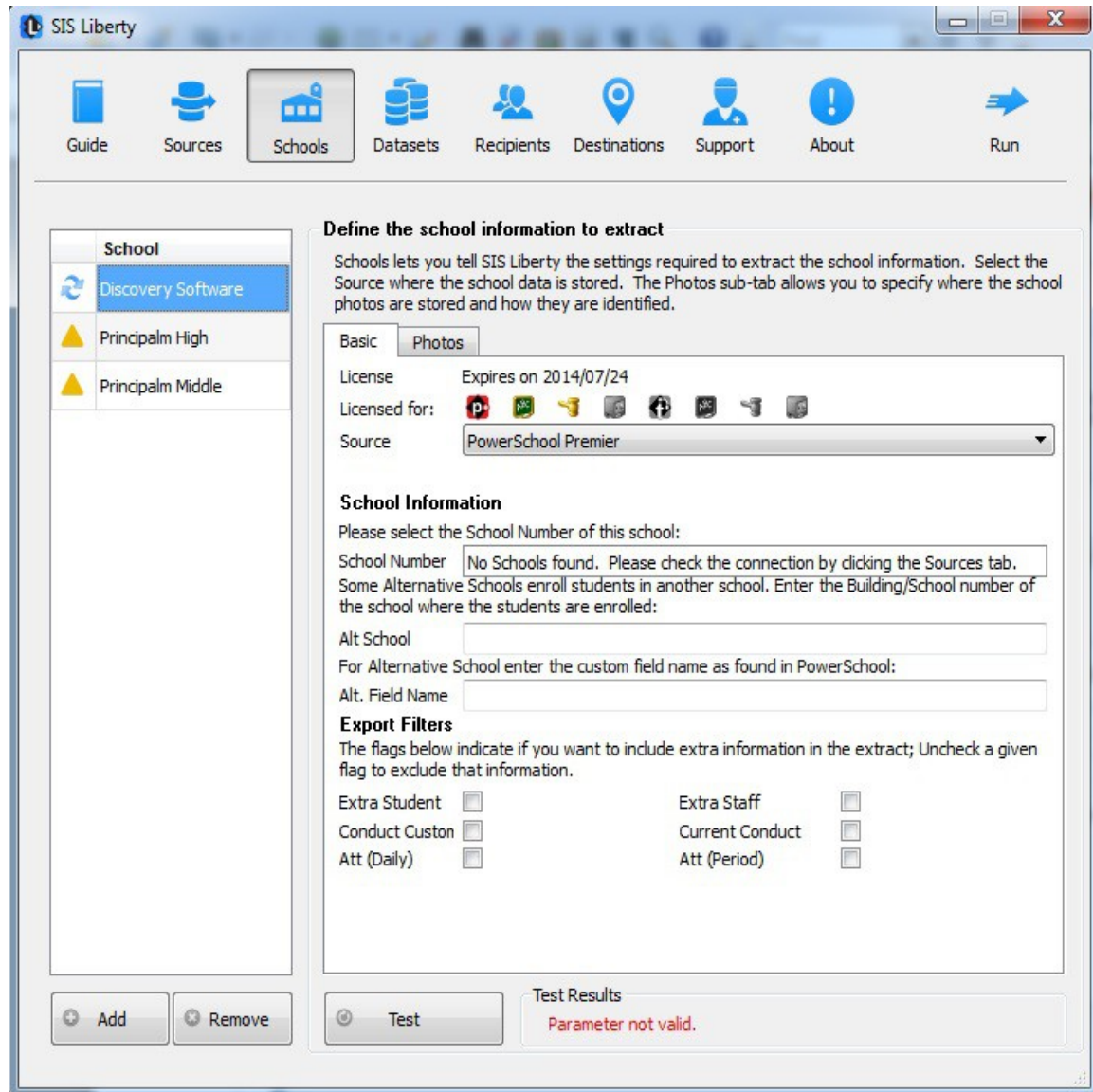
The screenshot shows the SIS Liberty application window. The top navigation bar includes icons for Guide, Sources (selected), Schools, Datasets, Recipients, Destinations, Support, About, and Run. The main content area is titled "Define where your information originates" and contains a list of sources on the left with "PowerSchool Premier" selected. The configuration form on the right includes fields for "Extracted by" (PowerSchool (Data Extractor)), "Name" (PowerSchool Premier), "Data Source Name and Login Information" (ODBC DSN: PowerSchool, Username, Password), and a "Test Results" section showing "Parameter not valid."

1. Click the Add button to create a new connection
2. Select PowerSchool (Data Extractor) from the Bridge drop down.
3. Enter a name that you want to use to identify the connection. Eg. PowerSchool
4. SIS Liberty will display the configuration parameters needed by the PowerSchool Data Extractor to configure the Connection.
5. Fill in the fields as follows:
 - **ODBC DSN** – enter the name of the ODBC DSN to connect to the PowerSchool database.

- **Username** – enter the username for the ODBC DSN.
 - **Password** – enter the password for the ODBC DSN
6. Click the **Test** button to test your settings. Test results should appear in the “Test Results” section

Setting up a School

After you configure your PowerSchool connection successfully, click on the Schools tab button to configure School information.



Any Discovery Licenses that exist in the License folder at:
\\Documents\DiscoverySoftware\Licenses will automatically be added into the Schools list.

To Add a school:

1. Click the **Add** button and browse for one or more Discovery License files (.paf) (If licenses were not loaded automatically)
2. Select the *Source* you want to associate with the selected school.
3. Select the *school number* from the **School Number** drop down
4. For **Alt School**, enter the building/school number for alternative school(s)
5. For **Alt School Custom Fields**, enter the custom field names (if needed)
6. Export Filters: Check the following boxes to add this info
 - Extra Student – to export additional students
 - Extra Staff – to export additional staff
 - Conduct Custom – to export custom conduct info
 - Current Conduct – to export current year conduct info
 - Att(Daily) – to export daily attendance
 - Att(Period) – to export period attendance
7. Click the **Test** button to test your settings. Test results should appear in the “Test Results” section

Removing Schools

To remove a school:

1. Select the school you wish to remove from the Schools list.
2. Click on the Remove button
3. Confirm you want to remove the School by clicking on the “Yes” button.

For more information on importing photos, setting up datasets and recipients to be delivered to your Provider/Product, as well as troubleshooting/support, please refer to **DSL's SIS Liberty User Guide** packaged with your provider installation.

Chapter 2 – Advanced Setup

Using Windows Scheduled Tasks

You can turn on automatic updates so that the data extractor is run on a periodic basis. By selecting the check box **Update destination data automatically** in SIS Liberty/Destinations, this will create a scheduled task that runs in the middle of the night. If you select the check box **This computer is turned off at night** then the scheduled task will run at log on. This feature enables your users to have the latest data without having to manually run the extractor to keep data synchronized.

If you make changes/updates in SIS Liberty, the batch file will automatically be updated to reflect the new settings

To modify the Schedule task that is created by SIS Liberty:

1. Select **Programs/Accessories/System Tools/Task Scheduler**. The **Scheduled Task** control panel appears.
2. Select Scheduled Task Library to view all tasks
3. Double-click your task to modify it

SIS Liberty creates and saves all batch files to:

\Documents\Discovery Software\Configuration, by default *ScheduleAll.bat* is the batch file that runs all tasks from start to finish. You may also schedule separate batch files manually, however please do not modify batch files if you are unsure of what to do.

The PowerSchool Data Extractor uses command line parameters to tell the extractor to perform certain actions and pass the necessary configuration information.

Command argument

The first parameter tells the extractor what task you would like it to complete.

Command	Description	Requirements
help	Displays usage for all arguments	
params	Lists the parameters that are required by the extractor.	Must include: -group or -paramkey (see below)
test	Test the extractor for the specified group.	Must include: -group
run	Extract data	Must include: Extract type: -all, -demo or -att -license -path Specific params dependant for groups
version	Get the version of the extractor	

Command optional Parameters

The command parameter is followed by a number of required parameters for that option.

Parameter	Description	Example
--group=value	This indicates which group you would like information for. Currently, the extractor supports the connection group and the school group	--group=connection or --group=school
--paramkey=key	This indicates which param to return or list values for. This can be any valid paramkey used by the extractor. See below.	--paramkey=dsn
Extract type --all, --demo, --att	This parameter tells the extractor if you want a full or partial extraction: -all : extracts all data supported -demo : extract just demographic	--all

	information -att : extract just attendance information	
--license=path	The full path to the license file to use for this extraction	--license=C:\mylicense.paf
--path=path	The full path to where the extracted data should be placed.	--path=C:\myschool\
--logpath=path	The full path to where logs should be placed.	--path=C:\myschool\logs\
--log=option	Where "option" can be any of these values: --log=off : no logging at all --log=consoleoff : no logging to the console --log=fileoff : no logging to file --log=sqloff : no logging to sqlite --log=extract : no logging to console while logging extract	--log=off --log=consoleoff --log=fileoff --log=sqloff --log=extract

The extractor supports the following Connection parameters:

Parameter	Description	Example
--dsn	The dsn name you created if you use MS SQL Server or Oracle	--dsn=PowerSchool
--user	The username for the odbc dsn.	--user=PSNavigator
--pwd	The password for the odbc dsn	--pwd=myspassword
--pwdencode	The encoded password for the odbc dsn, using the automatic scheduler will create an encoded password.	--pwdencode=!H&f3\$%&

The extractor supports the following School parameters:

Parameter	Description	Example
--district	The district number to extract	--district=12
--school	The school number to extract	--school=999
--activecodes	The student status codes that are considered active	--activecodes=J,V

NOTE: Remember to place quotes around parameters that might contain spaces.

All parameters must be set each time the extractor is run. No parameters are remembered between runs.

Chapter 3 – Customizing PowerSchool Export

What Can I Customize?

As we receive user feedback on fields that they wish to add we will continue to expand the DSL's PowerSchool Data Extractor. If you have suggestions on fields that exist in PowerSchool that you would like to see added, please do not hesitate to contact us at support@discoverysoftware.com.

Chapter 4 – Uninstall

To uninstall the Discovery Data Extractor for PowerSchool from your system, follow these steps:

1. Go to Start->Control Panel->Programs and Features.
2. Selected DSL's PowerSchool Data Extractor.
3. Click Remove to uninstall.

Appendix A – MS SQL Server ODBC Setup

The Discovery Data Extractor accesses PowerSchool's MS SQL Database database via an ODBC DSN. This ODBC Connection may already be set up.

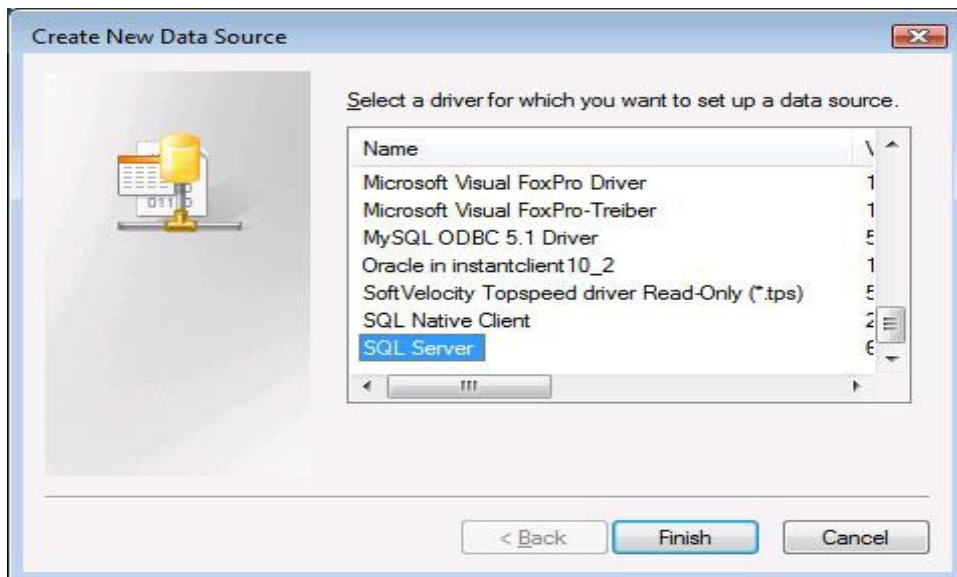
To check for an existing ODBC DSN:

1. Open the Windows **Data Sources (ODBC)** control panel:
 2. From the **Start** menu, choose **Control Panel**.
 3. On Windows 2000/XP, open the **Administrative Tools** folder.
 4. Double-click the **Data Sources (ODBC)** icon.
5. On the **User DSN** or **System DSN** tab, in the **User Data Sources** or **System Data Sources** list, check for an entry that matches your school.
6. Note the name of the DSN if you found one, this is the same name that you will enter in the **DSN** field in the Discovery Data Extractor later.

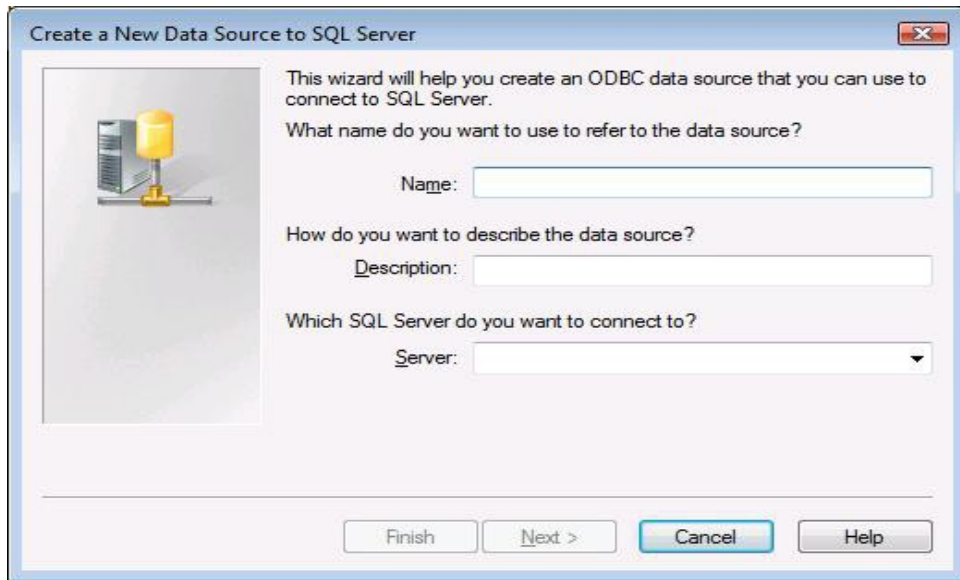
If you have no ODBC DSN entries matching your school, please follow these steps to add an ODBC DSN for PowerSchool:
To set up a MS SQL Server DSN:

1. Open the Windows **Data Sources (ODBC)** control panel:
 1. From the **Start** menu, choose **Control Panel**.
 2. On Windows 2000/XP, open the **Administrative Tools** folder.
 3. Double-click the **Data Sources (ODBC)** icon.
1. On the **System DSN** tab, click the **Add...** button.
2. From the list of drivers that appears, choose **SQL Server**, and click **Finish**.

Create a New Data Source to SQL Server screen will appear.

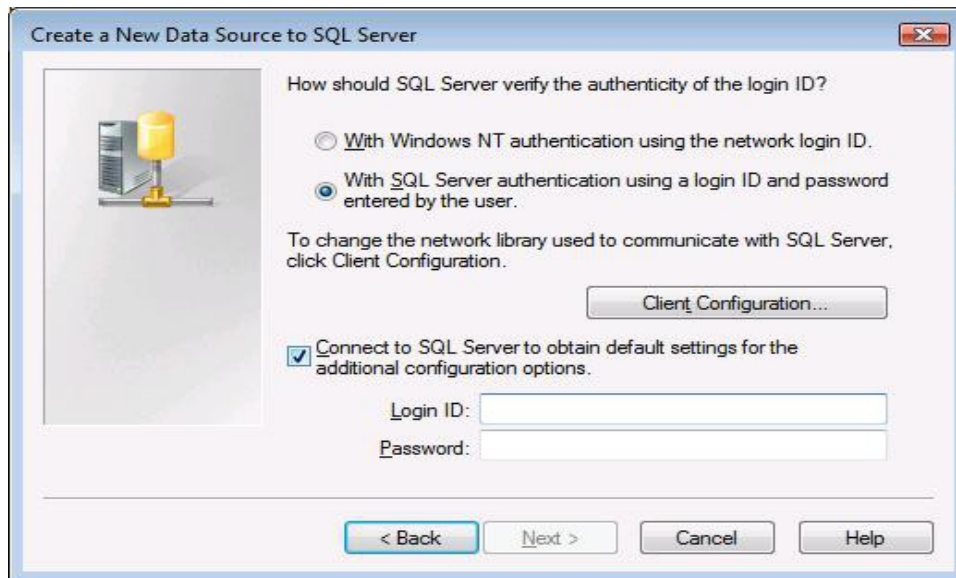


3. For **Data Source Name**, enter a name for the data source. Remember the name you choose, it is the same name you should enter in the **SIS2000 DSN** box in the Extractor.



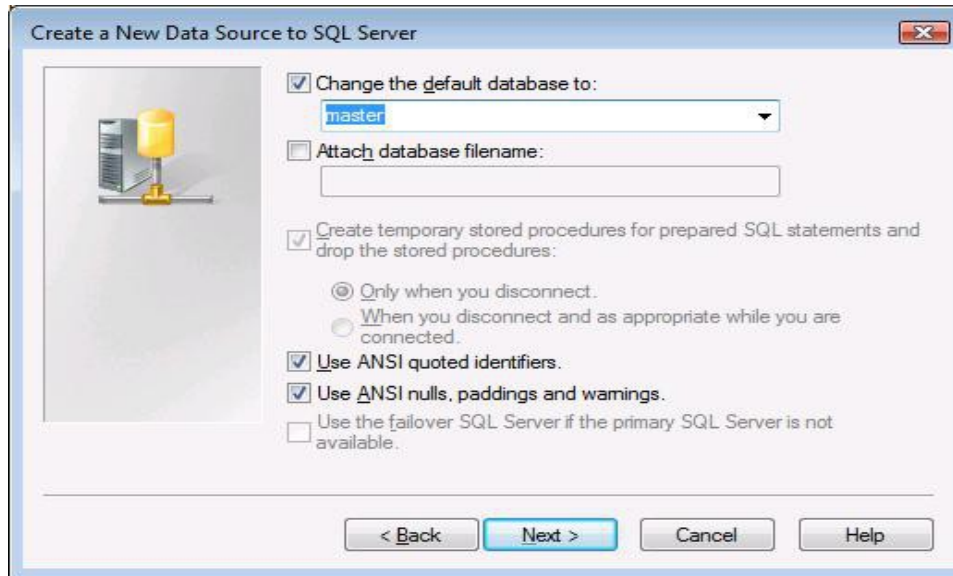
4. Click Next

5. Select the **With SQL Server authentication using a login ID and password entered by the user** radio button



6. Enter the credentials into the Login ID and Password fields. Then click **Next**.

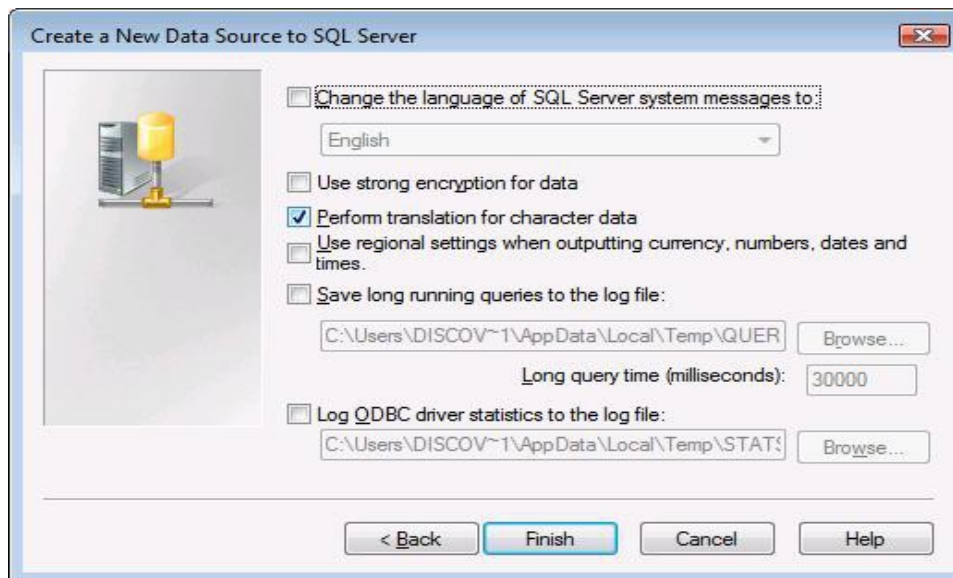
Note: You may need to modify Client Configuration. If you have trouble with this step, please talk with your local IT administrator.



7.If your Infinite Campus Database is not setup as the default database, click on the **Change the default database** checkbox and select the database from the drop down list.

Note: You are not required to enter data in the remaining fields.

8.Click **Next**.



9.Click **Finish** again to exit the ODBC Data Source Administrator.

Your Data Source is now set up and ready to be used by the Data Extractor.

Appendix A – Oracle ODBC Setup

If your installation of PowerSchool uses an Oracle database then this section will help you set up an ODBC DSN. This ODBC Connection may already be set up.

To check for an existing ODBC DSN:

1. Open the Windows **Data Sources (ODBC)** control panel:
2. From the **Start** menu, choose **Control Panel**.
3. On Windows 2000/XP, open the **Administrative Tools** folder.
4. Double-click the **Data Sources (ODBC)** icon.
5. On the **User DSN** or **System DSN** tab, in the **User Data Sources** or **System Data Sources** list, check for an entry that matches your school's database, most likely named "PowerSchool".
6. Note the name of the DSN if you found one, this is the same name that you will enter in the **DSN** field in the Discovery Data Extractor later.

If you have no ODBC DSN entries matching your school, please follow these steps to add an ODBC DSN for PowerSchool.

Setting up a PowerSchool Oracle ODBC DSN

If you do not have a PowerSchool ODBC DSN follow these steps.

1. Open the Windows **Data Sources (ODBC)** control panel:

On Windows 32-bit:

From the **Start** menu, choose **Control Panel**.

On Windows 2000/XP, open the **Administrative Tools** folder.

Double-click the **Data Sources (ODBC)** icon.

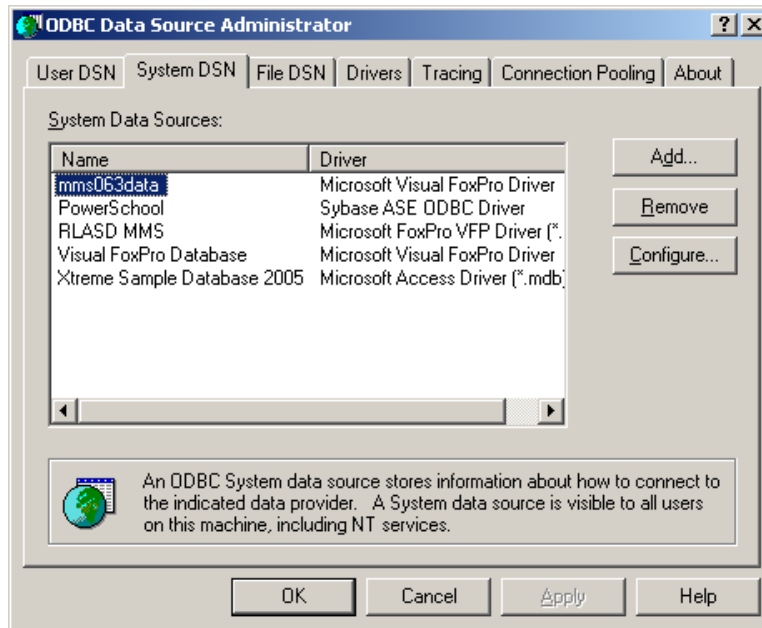
On Windows 64-bit:

From the **Start** menu, choose **Run**.

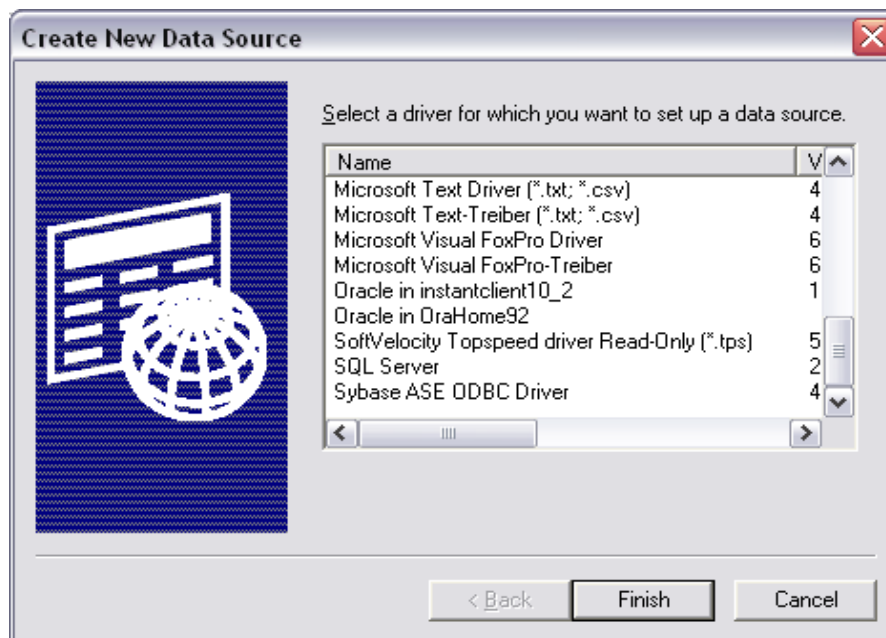
Type in: `C:\WINDOWS\SysWOW64\odbcad32.exe`

Click OK

2. This will open up the Data Source Administrator.
-
-



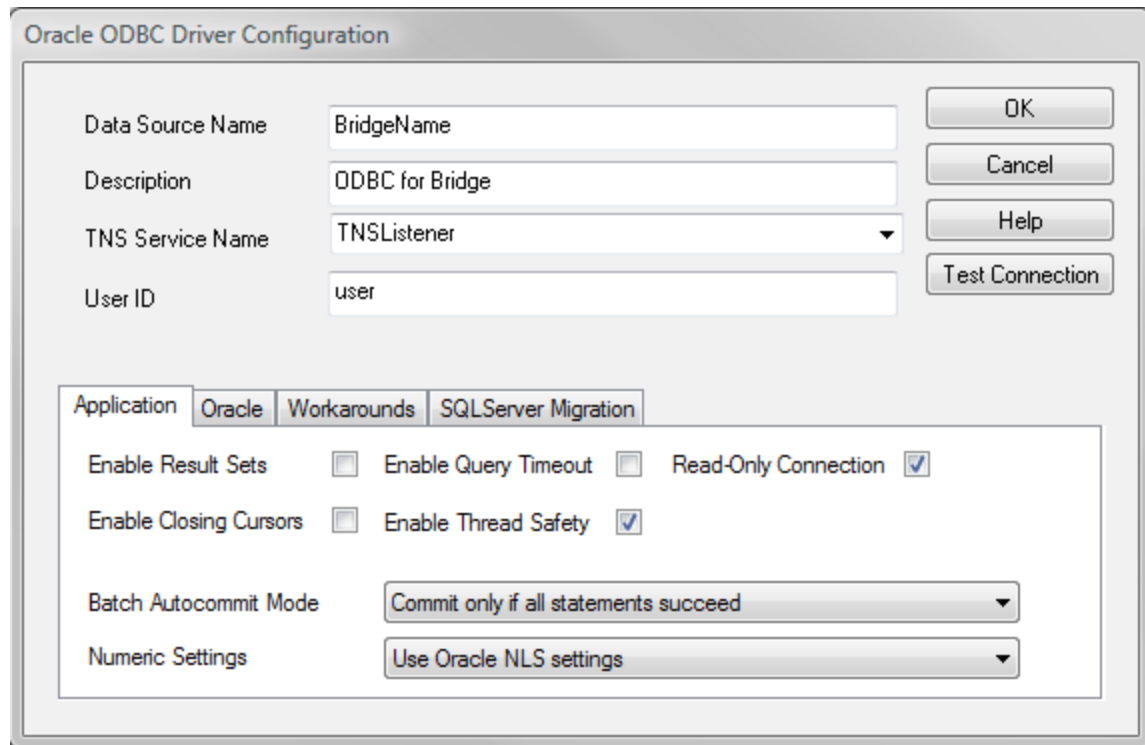
3. On the **System DSN** tab, click the **Add...** button.



4. Choose **Oracle in instantclient** from the list of drivers that appears, and click **Finish**. (Your Oracle driver may be different than this one, as long as the driver is from Oracle Corporation it should be fine)

If the Oracle Driver does not exist, see [Oracle Driver Installation](#) for instructions on how to install the driver.

5. This will bring up the Oracle ODBC Driver Configuration page:



6. Enter a Data Source Name, this can be anything, but you will need to use this name in the Data Extractor once you are finished; eg. PowerSchool.

7. For TNS Service Name this will be the TNS Service as determined by your PowerSchool install. Your Oracle DBA or PowerSchool administrator should know this information. It is in this format:

[server address]:[port]/[Listener]
as per the example above.

The **[server address]** is the ipaddress of your PowerSchool server.

The **[port]** should be: **1521**.

The **[Listener]** is the name of the Oracle Listener: most likely **PSPProdDB**

All of these settings should be defaults when you set up the PowerSchool server, your school may have changed these values during installation. If you are having trouble finding out these values, they can be found in the serverconfig.props file on the Oracle server.

8. User ID: This should be **PSnavigator**, although may be different depending on any changes your PowerSchool Administrator will have made.

Note: You may need to uncheck "Enable Query Timeout" on this screen. If you do not, on large queries (like Section information), you may get this error:

[Ora]ORA-01013: user requested cancel of current operation

9. Click **Test Connection**.

10. Enter the password for the **PSNavigator** account. This account is a read only account set up by Pearson. Your PowerSchool DBA should maintain the password for this account.

11. Click **OK**.

12. You should receive "Connection Successful". If not please check our Knowledge Base for possible solutions, or check your Pearson Manual for more information on how to set up this driver.

13. Click **OK**.

14. Click **OK** again to exit the ODBC Data Source Administrator.

Your Data Source is now set up and ready to be used by the Data Extractor.

Oracle Driver Installation

The Pearson documentation, **Oracle ODBC Configuration and Client Installation Guide**, contains more detailed information for installing and setting up these drivers.

Oracle Instant Client software is available via download at:

<http://www.oracle.com/technology/software/tech/oci/instantclient/index.html>

Note: An Oracle account is required in order to download the software. The account is free

and does not require PowerSchool license information.

From the Oracle Instant Client Downloads page:

1. Click on:
2. [Instant Client for Microsoft Windows \(32-bit\)](#) (Windows XP, Vista 32 bit): (If this link does not work, you can search for: "instant client basic download" look for **Instant Client downloads for Windows**
 - a) If you are using Vista 64 bit or Server 2008 (64 bit) you will still need to choose the 32-bit client.
 - b) You may need to log on to the Oracle site at this point.
 - c) Accept the user license agreement.
3. Look under the specific Version (this was tested with 10.2.0.4, but newer versions may work)
4. Download **Instant Client Package – (Basic or Basic Lite)**
5. Download **Instant Client Package – ODBC**
6. These two files are zip archives. You will need to extract them to your computer. Extract them into the same folder: eg. C:\InstantClient\
7. Add this location to your PATH environment variable:
8. Start->Settings->Control Panel->System
 - a) **Advanced** Tab.

- b) Environment Variables
- c) Under System Variables find a variable called **PATH** or **Path**.
- d) Select it, and click Edit.
- e) In the Variable value add the path of the Instant Client Package to the current value, separated by semi-colons. eg. You may add this string if this was your saved location from step 6 above:

C:\InstantClient\instantclient_10_2

9. Double click on the **odbc_install.exe** file in the Instant Client folder.

10. Your Oracle Drivers should be installed.

If you have trouble with this installation, please consult your Pearson Documentation or Oracle's website for more information.