

Please check <http://www.discoverysoftware.com/support/bridges/rsccl> for an updated Discovery Bridge for RSCCC User's Guide before printing. This will save you time, as we will be improving the guide based on feedback.



Discovery Bridge for RSCCC 1.1.0

Installation and User Guide

Revised: October 22<sup>th</sup>, 2008

Copyright © 2002-2008 Discovery Software Ltd.

---

# Table of Contents

<i>Chapter 1 – Preparing RSCCC</i> .....	3
Choosing a Import Folder.....	3
<i>Chapter 2 – Transferring Data from RSCCC to Connect</i> .....	4
Generating Export Files from RSCCC to Connect.....	4
Importing the RSCCC Export Files into Connect.....	7
<i>Chapter 3 – Customizing RSCCC Export</i> .....	8
<i>Chapter 4 – Uninstall</i> .....	8

---

## Chapter 1 – Preparing RSCCC

This section explains how to set up your computer to import data from RSCCC into Connect. By now you should have unzipped the file containing this guide. The unzipped contents of the file are:

- **rsccegguide.pdf** – this user guide
- **rscceg.pde** – the configuration file for the RSCCC extracts

### *Choosing a Import Folder*

The **Import Folder** is the location that you will store your exported files from RSCCC. Connect will read these files to create its internal database.

Once you have chosen an **Import Folder**, copy the RSCCC.pde file from the zip file into the **Import Folder**. This is the configuration file used by Connect to determine how to import the files generated by RSCCC.

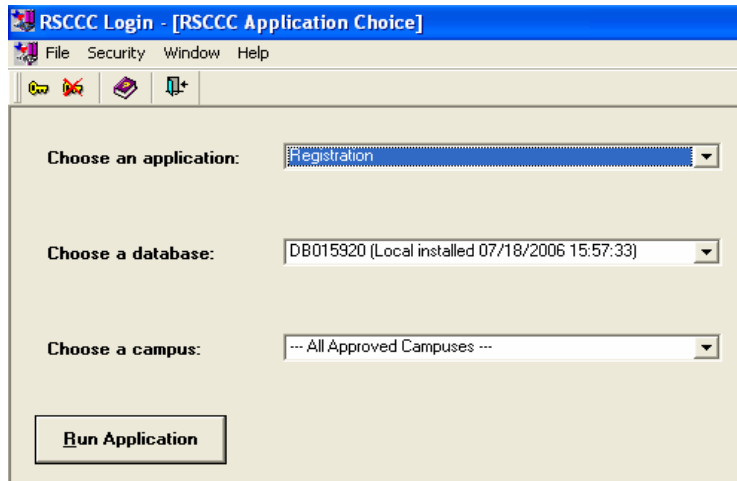
---

## Chapter 2 – Transferring Data from RSCCC to Connect

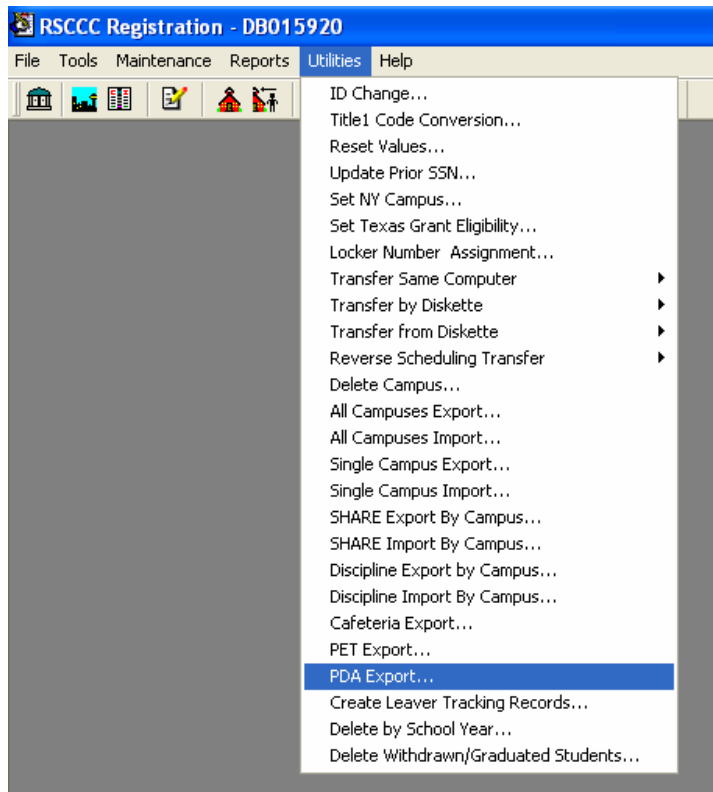
### *Generating Export Files from RSCCC to Connect*

To create the Extracts files:

1. Log on to RSCCC Registration application.

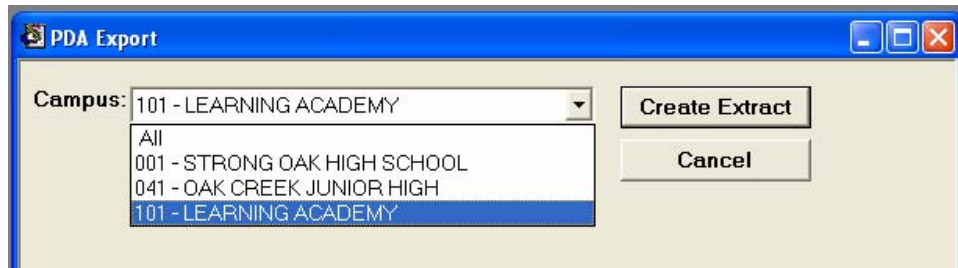


2. From the Utilities menu, select PDA Export. The PDA Export window appears.

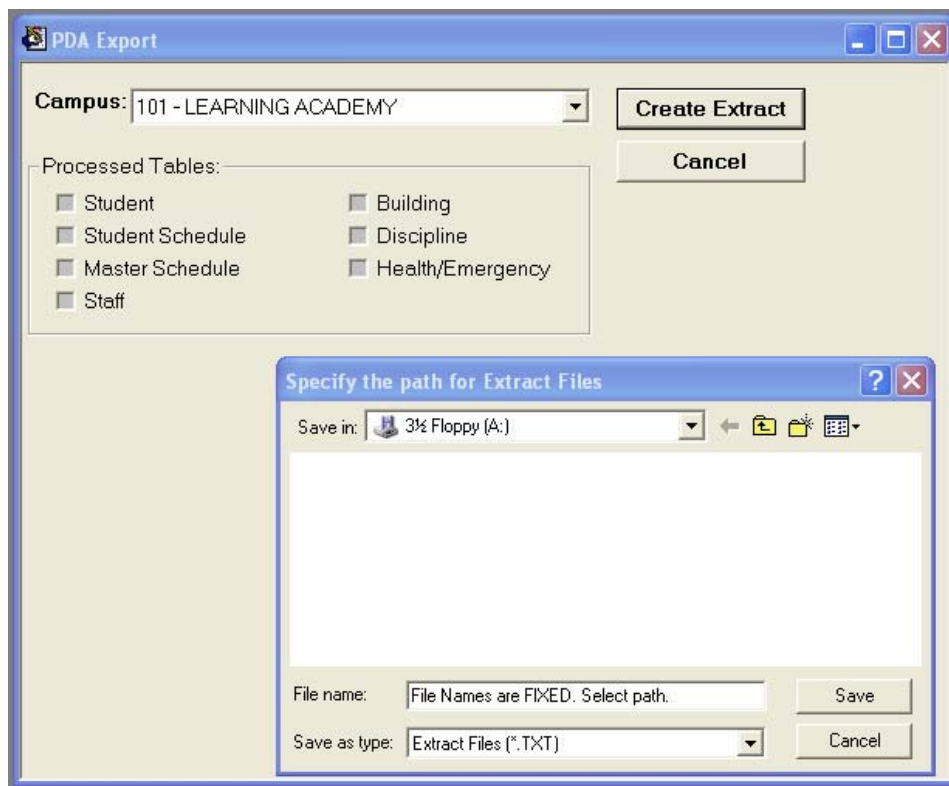


---

3. The **Campus** field defaults to the campus to which you are signed on. Click to select the campus you wish to export.



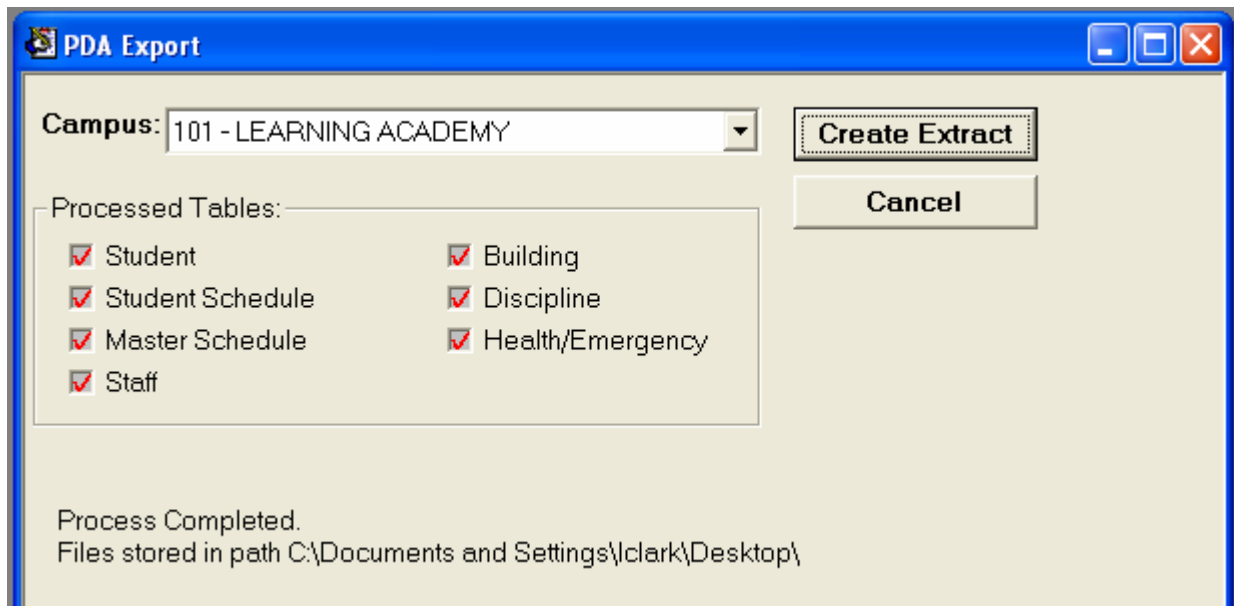
4. Click Create Extract. The dialog box to select a destination folder appears.



5. Select the **Import Folder** you created in Chapter 1. Then Click Save.

---

6. When the process is complete, the window displays the tables that have been processed and the path in which the files were saved. The check boxes are display only.



---

## ***Importing the RSCCC Export Files into Connect***

Follow the instructions for importing SIS data inside the Connect User Guide.

---

## Chapter 3 – Customizing RSCCC Export

Please contact Discovery Support ([support@discoverysoftware.com](mailto:support@discoverysoftware.com)) for more information on how you can customize the data that appears in Connect.

## Chapter 4 – Uninstall

To uninstall the Discovery Bridge for RSCCC:

- Delete the **Import Folder** you created in Chapter 1.