



DSL's Intuitions Builder Setup Guide
Revised: December 10, 2014

<http://www.discoverysoftware.com/>

Developed by:



www.discoverysoftware.com

COPYRIGHT, DISCOVERY SOFTWARE LTD.: This material may not be copied or otherwise reproduced in any form, by any means (electronic, photocopying, recording or otherwise) in whole or in part, without the expressed, prior, written permission of the publisher.

LIMIT OF LIABILITY: Discovery Software makes no representation or warranties with respect to the accuracy or completeness of this material and specifically disclaim any implied warranties or merchantability or fitness for any particular purpose and shall in no event be liable for any loss of profit or any other commercial damage including but not limited to special, incidental, consequential or other damages.

SOFTWARE WARRANTY: Discovery Software warrants the Principalm and SIS Liberty software products in so much as to service, replace, and otherwise upgrade the software product to ensure the functionality of the products as promised.

Introduction

Student information systems contain a lot of data. If used intentionally, this data has the potential to dramatically improve school performance. Intuitions does the data analysis for you, so that you can spend more time with your students.

When *Principalm* or *Teacherpalm* receives fresh data, Intuitions looks for patterns and creates a list. This list highlights students with outstanding attributes; irregular attendance, exceptionally low (or high) grades, events, and achievements. Items in the list (called intuitions) make it easy for staff to see where their attention is needed the most. Intuitions is an in-app notification system for Principalm and Teacherpalm that lets you know when something important happens with your students.

How it works

The Intuitions Builder must first be installed, this is an additional component that runs within SIS Liberty. The builder creates a SQLite database (intuitions.db) in an Intuitions sub folder of the data/pde folder. You can open it using any standard SQLite browser. Most of the tables found in the database are used for caching purposes and should not be modified.

The first time you run the builder it will cache the necessary data and on subsequent runs will compare the imported data with the cached data. It will generate intuitions if new, deleted or modified data is detected (basically looking for changes in the data).

Supported Intuitions

The following intuitions are generated based on Data Changed

- **New Student in School** - Demographics
- **Address Changed** - Demographics
- **Change of locker** – Demographics
- **Change of vehicle including parking stall, license plate** - Demographics

- **Change of Custody contact** - Demographics
- **Note change - including New, Changed and Removed** - Demographics
- **Course dropped/added** - Class
- **Medical condition change - including New, Changed and Removed** - Medical
- **Medical incident change** - Medical
- **Negative Conduct incident in past week** - Conduct
- **Positive Conduct incident in past week** - Conduct

Grade Intuitions

Grade intuitions are cached when they are read from the processed dataset. Because grades can be submitted over several days in preparation for the report card, the builder waits 7 days from the last grade cached before it will generate the intuitions. It does this by storing the generate date for the intuitions in the settings table. The key for the setting is GRADE_TIMER and the value is the date in yyyyMMdd format. Grades intuitions are generated for each Grading Period (Bin) and for each Grade Name that contains percent or letter grade values. Letter Grades are converted to percentages for the purpose of any calculations.

Grading Table

A	100
A-	95
B+"	90
B	85
B-	80
C+	77
C	75
C-	70
D+	67
D	65
D-	60
F	50

Attendance Intutions

Perfect attendance

Perfect attendance will be generated if the student has no attendance infractions from the beginning of the school year. It will be generated after 1 month, 2 months, 3 months and 6 months.

Good Attendance

Good attendance will be generated if a student has had 1,2,3 and 6 months of no attendance infractions. This is different from perfect attendance because a student may have attendance infractions prior to the milestones.

Attendance Infractions

An Attendance infraction intuition will be generated if more than 2 infractions have occurred in the past 2 weeks. Additional infractions will not be generated for 2 weeks. (Chronic and Attendance infractions count towards this delay)

Chronic Attendance

A Chronic attendance intuition will be generated if more than 5 infractions have occurred in the past 2 weeks. Additional infractions will not be generated for 2 weeks. (Chronic attendance count towards this delay)

Missed more than 10% of classes in first 30 days of school

The builder will detect if we are past the first 30 days of school before generating this intuition. It does this by checking the calendars start date. The builder will generate this intuition for each calendar imported. Once the intuitions have been generated the build will place a FALSE value in the settings table for the GENERATE_START_SCHOOL_INTUITIONS-. This will prevent further runs of the builder from generating intuitions. The 30 days of school is calculated based on the calendar. If period attendance is cached it will be used to calculate this intuitions. Otherwise daily attendance will be used. To determine how many attendance infractions must be achieved before this intuition is calculated:

Period Attendance

$(\text{Number of timeslots} * 30) / 10$

Daily Attendance

$(\text{Number of timeframes} * 30) / 10$

System Requirements

Software Requirements:

- Provider Installation Package
<http://apps.discoverysoftware.com/>
- Intuitions Builder
<http://apps.discoverysoftware.com/support/software/intuit/>

Third-party Applications

- C++ Redistributable for Microsoft Visual Studio 2012. This software is used by our installers and most of our products (required)
- NET Framework (minimum version 2.0) version 3.5 included in package installer from <http://www.microsoft.com/net/download/earlier-versions> (useful, but not required). Without .NET framework you will need to manually install the service for Discovery Update Service to work.

Desktop Requirements:

Operating System:

- Microsoft XP or later
- Mac OS X (only supported via virtualization: VMWare Fusion, Parallels, Virtual Box, etc)

Hard drive space:

- 20 MB (for application)
- 1 GB for data (largely dependent on size of school, number of students, SIS etc)

Memory requirements:

- Minimums based on your OS requirements
- Recommended: 1 GB or more
- The more memory available the faster the application will run
- If running on a virtual machine, memory requirements are greatly increased.

Optional:WiFi (802.11) network (required for updating with DUS)

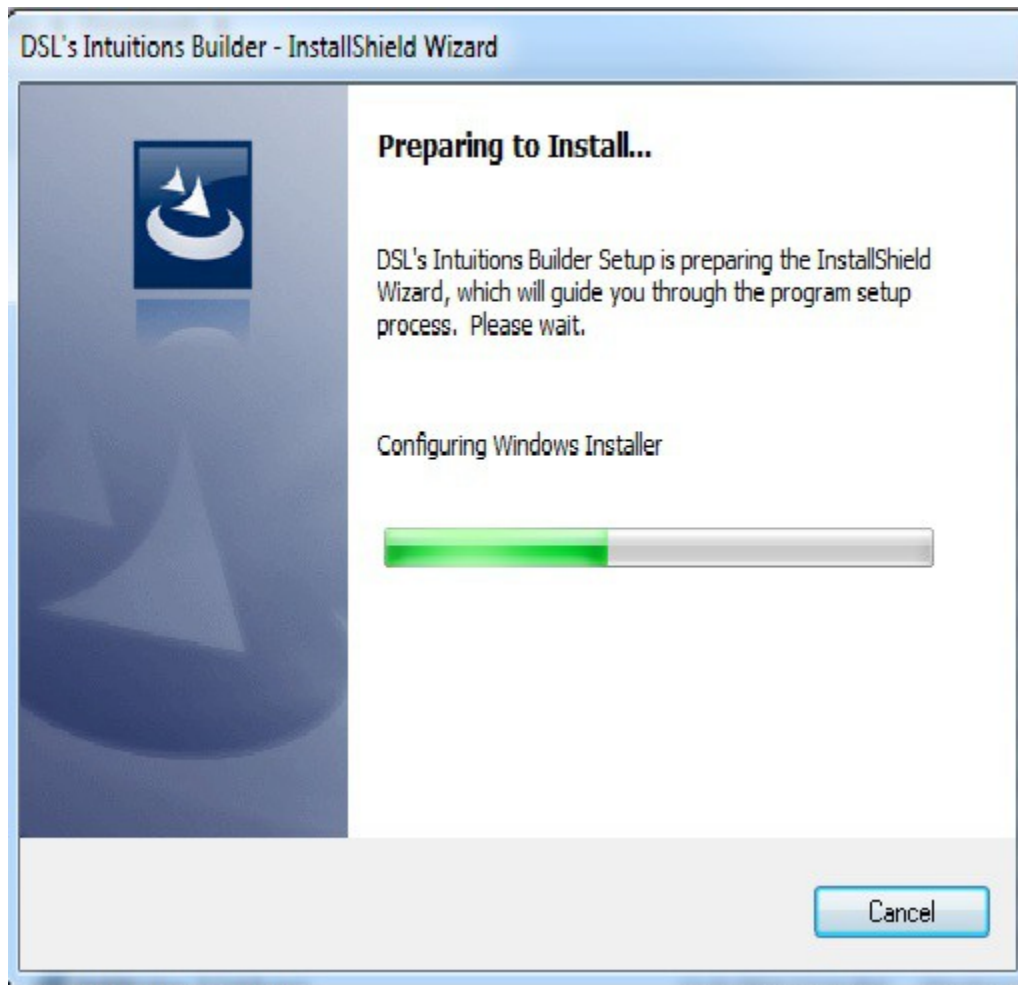
Installing the Intuitions Builder

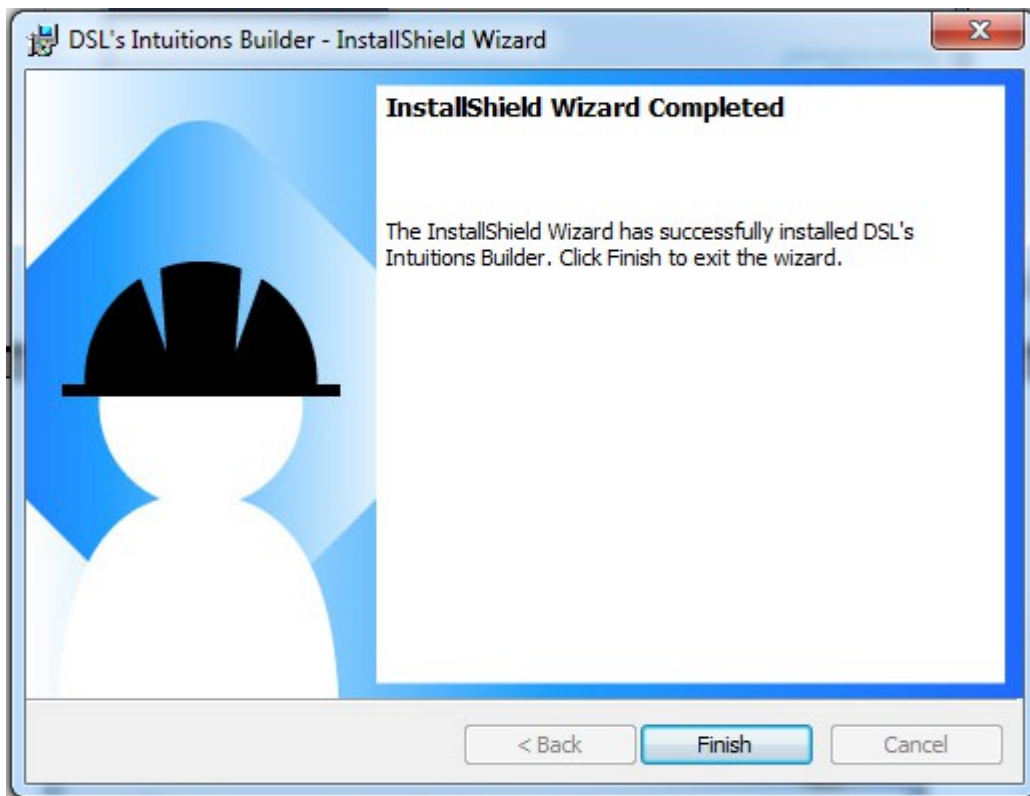
The Intuitions Builder is a component installed separately to be configured and run within SIS Liberty

Locate and download the Intuitions Builder from:

<http://apps.discoverysoftware.com/support/software/intuit/>

Click **Run** to start the installation wizard or **Save** it to run later.

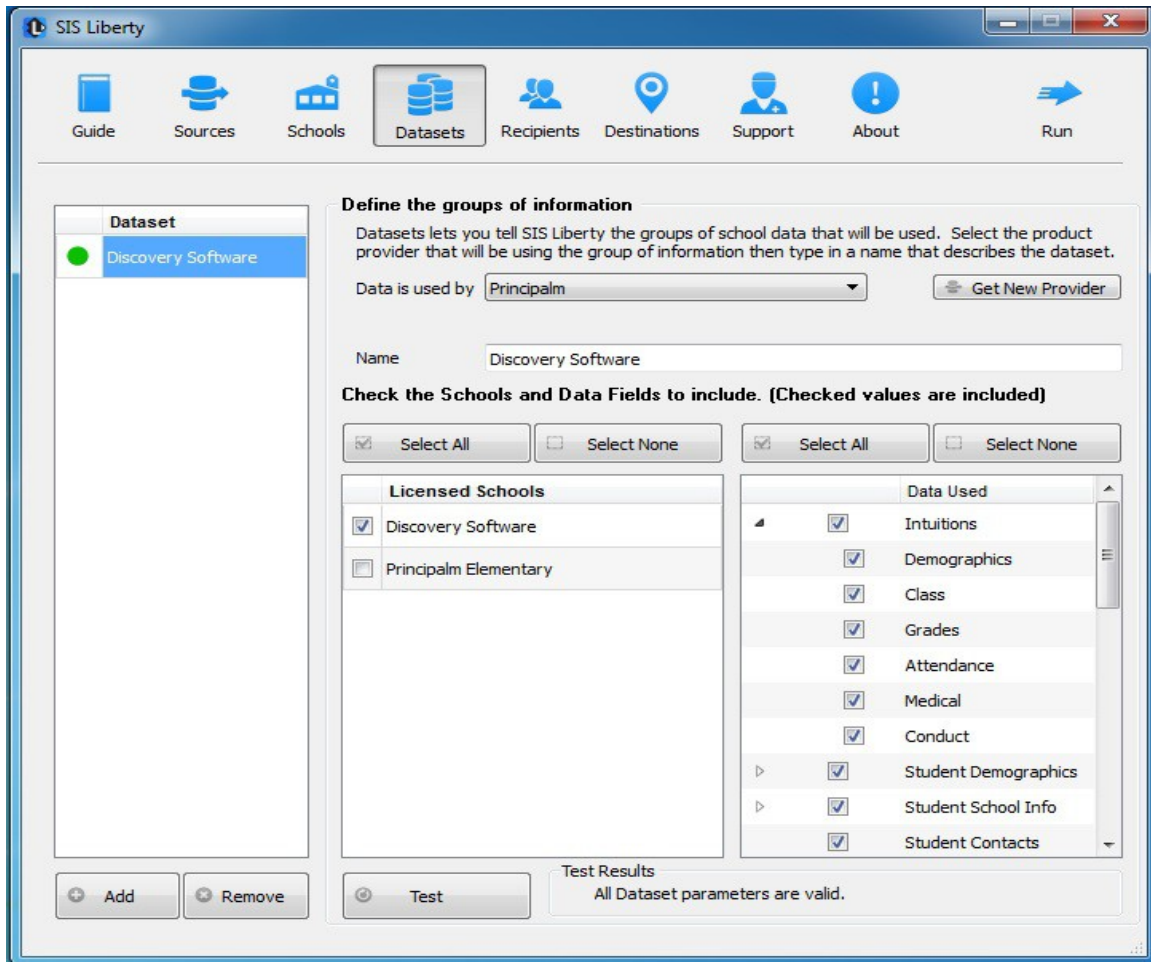




Complete the installation wizard then click **Finish** to complete the installation

Setting up Datasets with Intuitions

In SIS Liberty under the Datasets tab you will choose which provider/app will be using this data, in this example its *Principalm*.



Name: Create a name for this dataset ie Principalm High or PHS. You can abbreviate if setting up an entire district or be as descriptive as you like ie; PHS Staff Only

Licensed Schools: Select the “Licensed School(s)” to be included in this dataset (ie: Discovery Software). This list will be populated with the schools you added on the Schools tab.

Data Used: Intuitions filters will be turned on by default after installing the builder. Click the arrow next to the filter to expand all Intuitions. You will also be able to set filters directly in the app.

Click **Test** to test Dataset parameters

Please refer to the SIS Liberty Users Guide on how to complete the update