



DSL's Principalm Provider Setup Guide
Revised: July 8, 2015

<http://www.discoverysoftware.com/>

Developed by:



www.discoverysoftware.com

COPYRIGHT, DISCOVERY SOFTWARE LTD.: This material may not be copied or otherwise reproduced in any form, by any means (electronic, photocopying, recording or otherwise) in whole or in part, without the expressed, prior, written permission of the publisher.

LIMIT OF LIABILITY: Discovery Software makes no representation or warranties with respect to the accuracy or completeness of this material and specifically disclaim any implied warranties or merchantability or fitness for any particular purpose and shall in no event be liable for any loss of profit or any other commercial damage including but not limited to special, incidental, consequential or other damages.

SOFTWARE WARRANTY: Discovery Software warrants the Principalm and SIS Liberty software products in so much as to service, replace, and otherwise upgrade the software product to ensure the functionality of the products as promised.

Introduction

Discovery Software Ltd. has spent over 20 years perfecting a data extraction tool for more than 100 different Student Information Systems (SIS's). The extracted data needs to be in a standard format so that it can be compatible with our handheld applications such as Principalm.

We've realized that Principalm is not the only product that requires SIS data; our evaluation software, Rubrix, needs it as well. We've now dramatically extended the Acorn/Connect product that supplies data to Principalm so that it can send information to a variety of other external programs as well.

In extending the scope of this product, we've also changed the name to SIS Liberty – because it will completely liberate your SIS data while giving you complete control over how your student information is used.

The new **SIS Liberty** allows you to extract data from your Student Information System and use it with a variety of Discovery and third-party products. It is completely available to use when and where you need it – *your school, your data.*

System Requirements

Software Requirements:

- A compatible Student Information System. See our list of supported (but not limited to) SIS's: <http://apps.discoverysoftware.com/support/bridges/> If your SIS is not listed, please contact us and we will work together to support it.
- Provider Installation Package <http://apps.discoverysoftware.com/>

Third-party Applications

- C++ Redistributable for Microsoft Visual Studio 2012. This software is used by our installers and most of our products (required)
- NET Framework (minimum version 2.0) version 3.5 included in package installer from <http://www.microsoft.com/net/download/earlier-versions> (useful, but not required). Without .NET framework you will need to manually install the service for Discovery Update Service to work.
- Bonjour Print Services (optional) available at: <http://support.apple.com/kb/dl999>

Desktop Requirements:

Operating System:

- Microsoft XP or later
- Mac OS X (only supported via virtualization: VMWare Fusion, Parallels, Virtual Box, etc)

Hard drive space:

- 20 MB (for application)
- 1 GB for data (largely dependent on size of school, number of students, SIS etc)

Memory requirements:

- Minimums based on your OS requirements
- Recommended: 1 GB or more
- The more memory available the faster the application will run
- If running on a virtual machine, memory requirements are greatly increased.

Optional:WiFi (802.11) network (required for updating with DUS)

Installing the Principalm Provider Package

The Principalm Provider package contains all of the components you need to use SIS Liberty for Principalm, except for the bridge for your SIS.

Contents in this package:

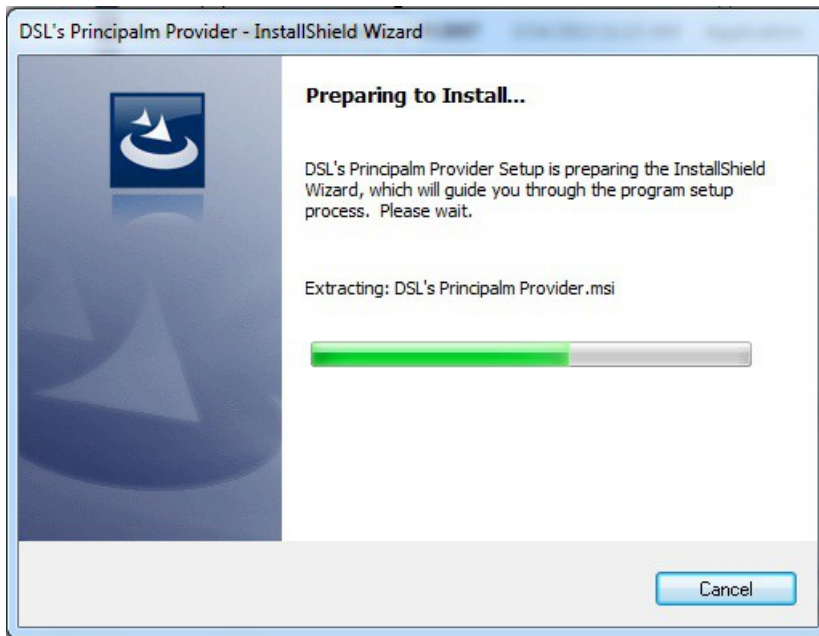
- C++ Redistributable for Microsoft Visual Studio 2012 (details: <http://www.microsoft.com/en-ca/download/details.aspx?id=30679>)
- .NET Framework (version 3.5)
<http://www.microsoft.com/net/download/earlier-versions>
- Principalm Provider (current version)
- Discovery Update Service and Destination (current version)
- SIS Liberty User Interface (current version)

Locate and download the Principalm Provider Package from:
<http://apps.discoverysoftware.com>



Click **Run** to start the installation wizard

At this point the installer may install packaged components, depending on your configuration, after all components are installed the Principalm Provider will install will start.



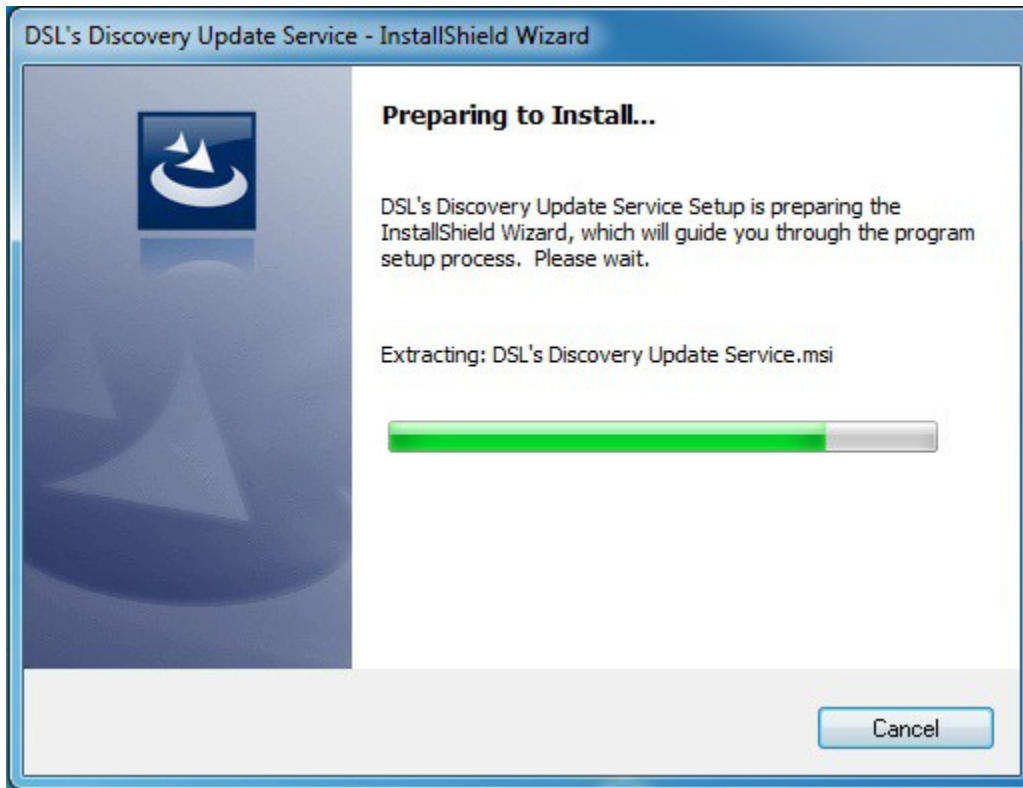
Click **Finish** to complete the Principalm Provider installation

When the Principalm Provider installation completes, the **Discovery Update Service** installation will start shortly after, see its user guide for more detailed instructions:

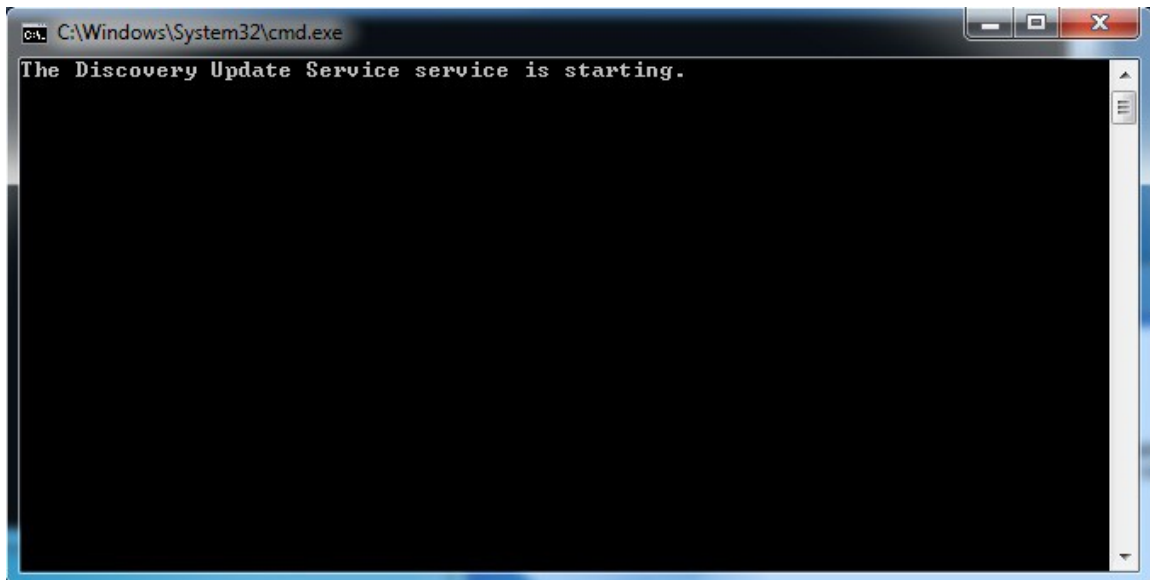
<http://apps.discoverysoftware.com/support/software/DUS/>



Click **Next** to start the DUS installation wizard



Click **Finish** to complete the Discovery Update Service installation. A DOS window will splash briefly and display the status of the service

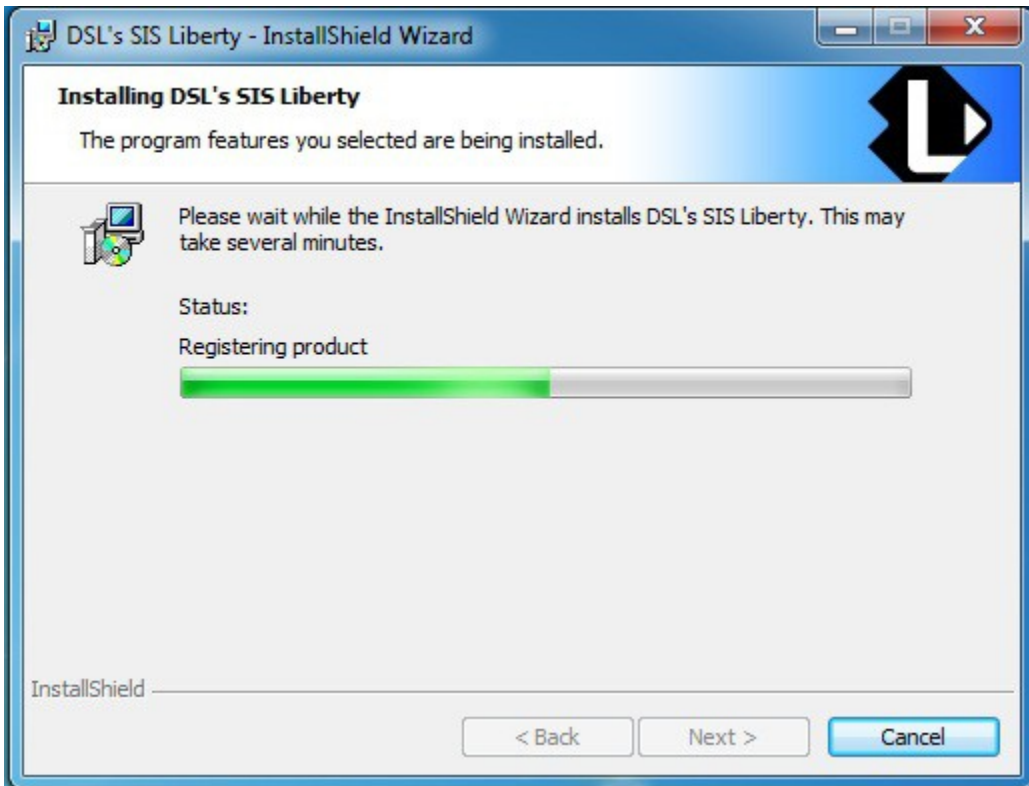


The **SIS Liberty** installation will start shortly after, see SIS Liberty User Guide for more detailed instructions

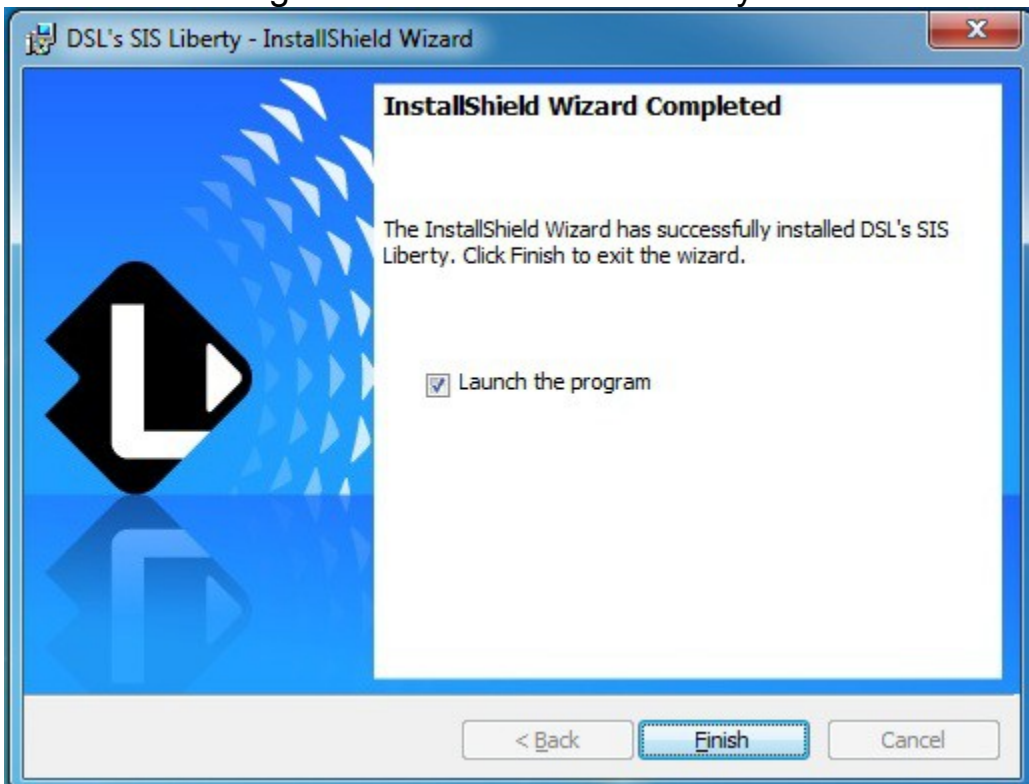
<http://apps.discoverysoftware.com/support/software/sislib/>

Click **Next** to start the SIS Liberty installation wizard





Click **Finish** to complete the SIS Liberty installation and check the “Launch the Program” box to start SIS Liberty.



How to use Principalm Provider

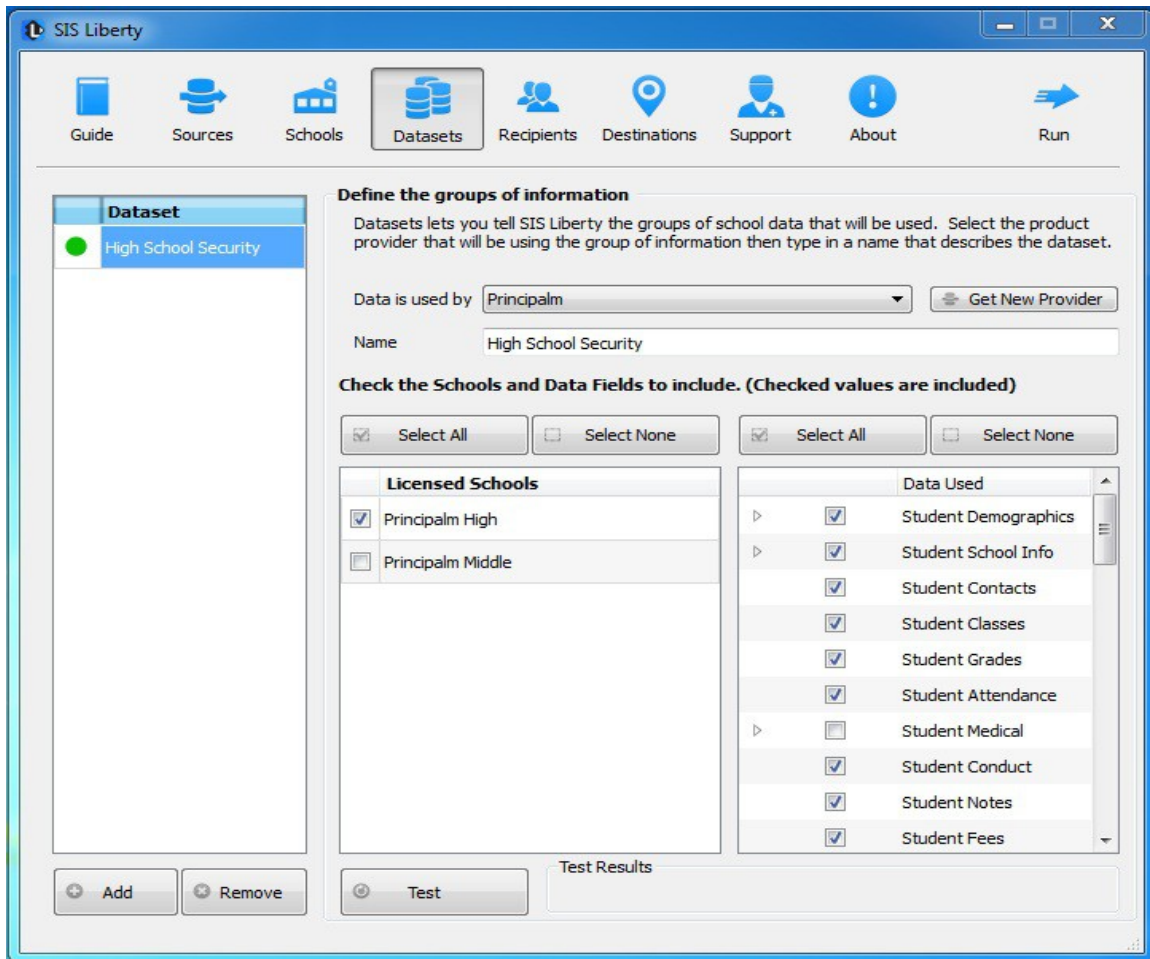
Principalm Provider can be used via the SIS Liberty user interface, or alternatively you can run it via the command line interface (to support modified batch files, scheduling, etc).

Principalm Provider with SIS Liberty

Detailed instructions on how to set up SIS Liberty can be found in the SIS Liberty User Guide:

<http://apps.discoverysoftware.com/support/software/sislib/>

Setting up Datasets with Principalm



In SIS Liberty under the Datasets tab you will choose which provider/app will be using this data, in this case its Principalm.

Name: Create a name for this dataset ie Principalm High or PHS. You can abbreviate if setting up an entire district or be as descriptive as you like ie; PHS Staff Only

Licensed Schools: Select the “Licensed School(s)” to be included in this dataset (ie: Principalm High). This list will be populated with the schools you added on the Schools tab.

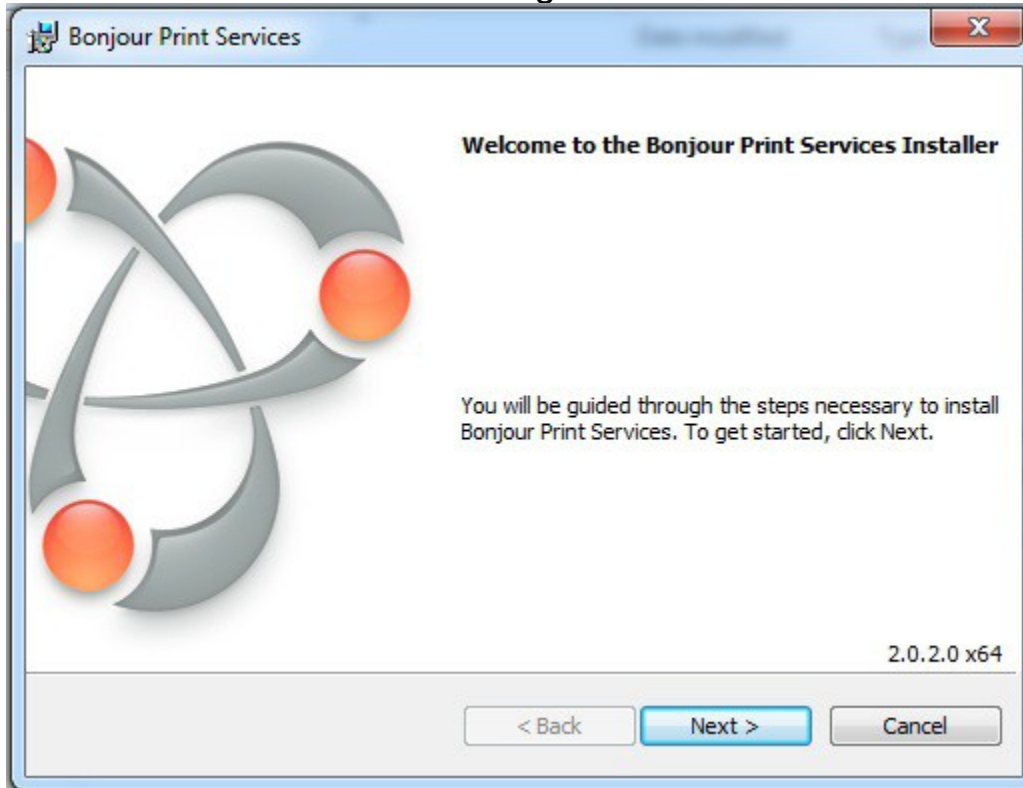
Data Used: Check the data that is to be included in this dataset. Uncheck the data to filter it (ie: High School Security may not want to see Student Medical so uncheck “Student Medical”).

Repeat steps and customize for all datasets added. Click **Test** to test Dataset parameters
Please refer to the SIS Liberty Users Guide on how to complete the update.

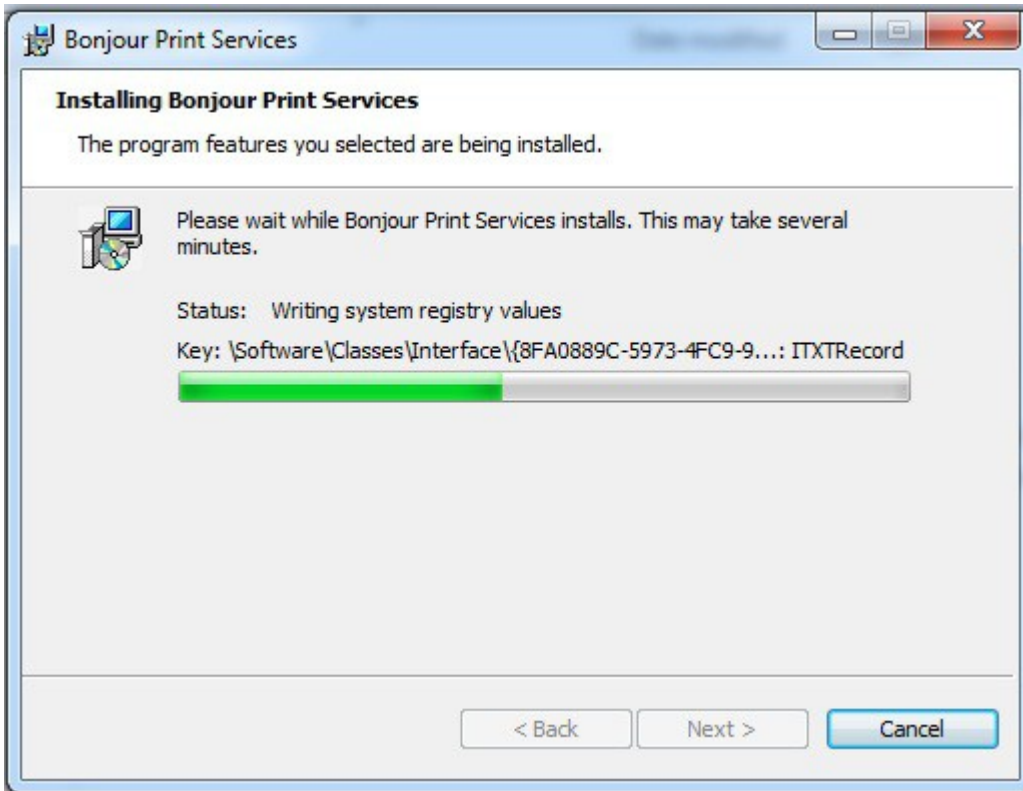
Appendix A - Bonjour Installation

Bonjour Print Services is used to locate the IP Address of the computer that is running the Discovery Update Service

Click **Download** then **Run** to begin the installation wizard



Click **Next** to begin installation



Click **Finish** to complete installation

